

---

Rhythmyx

# Installing Rhythmyx

Version 7.0.3

## Copyright and Licensing Statement

All intellectual property rights in the SOFTWARE and associated user documentation, implementation documentation, and reference documentation are owned by Percussion Software or its suppliers and are protected by United States and Canadian copyright laws, other applicable copyright laws, and international treaty provisions. Percussion Software retains all rights, title, and interest not expressly granted. You may either (a) make one (1) copy of the SOFTWARE solely for backup or archival purposes or (b) transfer the SOFTWARE to a single hard disk provided you keep the original solely for backup or archival purposes. You must reproduce and include the copyright notice on any copy made. You may not copy the user documentation accompanying the SOFTWARE.

The information in Rhythmyx documentation is subject to change without notice and does not represent a commitment on the part of Percussion Software, Inc. This document describes proprietary trade secrets of Percussion Software, Inc. Licensees of this document must acknowledge the proprietary claims of Percussion Software, Inc., in advance of receiving this document or any software to which it refers, and must agree to hold the trade secrets in confidence for the sole use of Percussion Software, Inc.

The software contains proprietary information of Percussion Software; it is provided under a license agreement containing restrictions on use and disclosure and is also protected by copyright law. Reverse engineering of the software is prohibited.

Due to continued product development this information may change without notice. The information and intellectual property contained herein is confidential between Percussion Software and the client and remains the exclusive property of Percussion Software. If you find any problems in the documentation, please report them to us in writing. Percussion Software does not warrant that this document is error-free.

No part of this publication may be reproduced, stored in a retrieval system, or transmitted in any form or by any means, electronic, mechanical, photocopying, recording or otherwise without the prior written permission of Percussion Software.

Copyright © 1999-2011 Percussion Software.  
All rights reserved

## Licenses and Source Code

Rhythmyx uses Mozilla's JavaScript C API. See <http://www.mozilla.org/source.html> for the source code. In addition, see the Mozilla Public License (<http://www.mozilla.org/source.html>).

Netscape Public License

Apache Software License

IBM Public License

Lesser GNU Public License

## Other Copyrights

The Rhythmyx installation application was developed using InstallShield, which is a licensed and copyrighted by InstallShield Software Corporation.

The Sprinta JDBC driver is licensed and copyrighted by I-NET Software Corporation.

The Sentry Spellingchecker Engine Software Development Kit is licensed and copyrighted by Wintertree Software.

The Java™ 2 Runtime Environment is licensed and copyrighted by Sun Microsystems, Inc.

The Oracle JDBC driver is licensed and copyrighted by Oracle Corporation.

The Sybase JDBC driver is licensed and copyrighted by Sybase, Inc.

The AS/400 driver is licensed and copyrighted by International Business Machines Corporation.

The Ephox EditLive! for Java DHTML editor is licensed and copyrighted by Ephox, Inc.

This product includes software developed by CDS Networks, Inc.

The software contains proprietary information of Percussion Software; it is provided under a license agreement containing restrictions on use and disclosure and is also protected by copyright law. Reverse engineering of the software is prohibited.

Due to continued product development this information may change without notice. The information and intellectual property contained herein is confidential between Percussion Software and the client and remains the exclusive property of Percussion Software. If you find any problems in the documentation, please report them to us in writing. Percussion Software does not warrant that this document is error-free.

No part of this publication may be reproduced, stored in a retrieval system, or transmitted in any form or by any means, electronic, mechanical, photocopying, recording or otherwise without the prior written permission of Percussion Software.

AuthorIT™ is a trademark of Optical Systems Corporation Ltd.

Microsoft Word, Microsoft Office, Windows®, Window 95™, Window 98™, Windows NT® and MS-DOS™ are trademarks of the Microsoft Corporation.

This document was created using AuthorIT™, Total Document Creation (see AuthorIT Home - <http://www.author-it.com>).

Schema documentation was created using XMLSpy™.

**Percussion Software**

600 Unicorn Park Drive

Woburn, MA 01801 U.S.A.

781.438.9900

Internet E-Mail: [technical\\_support@percussion.com](mailto:technical_support@percussion.com)

Website: <http://www.percussion.com>



# Contents

<b>System Requirements and Installation Prerequisites</b>	<b>7</b>
System Requirements .....	8
Server System Requirements .....	8
Developer Tools System Requirements .....	9
Desktop Client Components .....	9
Repository Database Requirements .....	10
Installation Prerequisites .....	11
Prerequisites for Installation to Unix and Linux Environments .....	11
Prerequisites for IBM DB2 (UDB) .....	11
Prerequisites For Upgrade from Rhythmyx Version 5.7 and Earlier .....	12
<b>Installation</b>	<b>13</b>
Installation Flow Charts .....	14
New Installation .....	15
Upgrade Installation .....	16
Starting Installations .....	17
Installing Remote Client Components .....	17
Installation Sequence .....	18
Welcome and Product Licensing .....	19
Installation Configuration .....	22
Product Selection .....	26
Upgrade Configuration .....	31
Repository Configuration .....	36
Server Properties .....	42
Installation Summary .....	47
Completing the Installation .....	49
Additional Procedures for Upgrades from Rhythmyx Version 5.7 and Earlier .....	55
<b>Additional Installation Issues</b>	<b>57</b>
Important Security Measures .....	58
Assigning New Passwords to Default Users .....	58
Replacing the Default Users with New Users .....	59
Rhythmyx Workbench Options .....	60
Technical Support .....	61



## CHAPTER 1

# System Requirements and Installation Prerequisites

Rhythmyx includes the following components:

- Repository Database
  - Microsoft SQL Server
  - Oracle
  - MySQL
- Server, including Publishing System
- The following remote components:
  - Developer Tools
  - Multi-server Manager
- Optional target database for database publishing
  - Microsoft SQL Server
  - Oracle
  - MySQL

In a Windows environment all components can be installed. In a UNIX environment you can only install the Repository Database and the Server (and optional database publishing target).

# System Requirements

The following topics list the system requirements to install and operate Rhythmyx. These numbers should be used as a guideline. The actual resources required depend on many factors, such as the number of contributors, how frequently content is published, and how frequently it is updated.

## Server System Requirements

The Rhythmyx server can be installed in the following environments:

### Sun Solaris 11

	Development Server	Production Server
Processor	UltraSPARC IV (dual core) - 2 GHz	UltraSPARC T1 1.0 GHz
RAM	2 GB	4 GB
Disk Space	1.2 GB + 1.2 GB for installation and application data	1.2 GB + 1.2 GB for installation (and, depending on the amount of application data, 2 - 20 GB more on the server and 2 - 20 GB more on the database machine)

### Microsoft Windows

Windows 2003 (Server and Advanced Server), Windows XP, Windows Server 2008

	Development Server	Production Server
Processor	2 GHz dual core	3 GHz dual core
RAM	1 GB + 1 GB for the database	3-4 GB (assuming that the database is on a different system)
Disk Space	1.2 GB + 1.2 GB for installation and application data	1.2 GB + 1.2 GB for installation (and, depending on the amount of application data, 2 - 20 GB more on the server and 2 - 20 GB more on the database machine)

### Linux

Certified on Red Hat Linux AS 4.0, Red Hat Linux 5.0, and SUSE Linux Version 11.

	Development Server	Production Server
Processor	2 GHz (dual core)	3 GHz (dual core)
RAM	1 GB + 1 GB for the database	3-4 GB (assuming that the database is on a different system)



Linux OS certified on Intel-based hardware.

	<b>Development Server</b>	<b>Production Server</b>
Disk Space	1.2 GB + 1.2 GB for installation and application data	1.2 GB + 1.2 GB for installation (and, depending on the amount of application data, 2 - 20 GB more on the server and 2 - 20 GB more on the database machine)

## Developer Tools System Requirements

The Developer Tools are certified only in a Windows environment, including:

Windows XP Professional 2003 (NOTE: Not currently certified on Windows XP Service Pack 2)

Windows 2003 Server platform

Windows Vista, Windows 7

Windows Server 2008, Note: Windows R2 is supported in 64 bit mode.

### Hardware Requirements

Processor                      Pentium IV or faster 2 GHz

RAM                                1 GB or greater recommended

Disk Space                      400 MB to run installed product (800 MB during installation)

## Desktop Client Components

Rhythmyx supports the following browsers for content maintenance, publishing, workflow, and system administration:

- Internet Explorer Version 7.0 and 8 (Windows)
- Mozilla Firefox Version 3.5 or 3.6 and higher (Windows)
- Safari Version 4.0.4 (Macintosh)

The Content Explorer applet requires Java JRE 1.5.0\_07; on Microsoft Windows Vista, the minimum supported version is 1.5.0\_11; on Microsoft Windows Server 2008, the minimum supported version is Java JRE 1.6.0\_7.

## Repository Database Requirements

Before installing any Rhythmyx components, be sure you have a relational database management system installed. Rhythmyx currently supports:

<b>RDBMS</b>	<b>Supported Versions</b>
Oracle	10g, 11g  NOTE: When installing the Repository to Oracle 10g or 11g, the installation user must have CONNECT and RESOURCE privileges, and must also have Create View permission. This permission is implicitly granted with the CONNECT Role in Oracle 10g, but must be explicitly granted in Oracle 11g.
MS SQL Server	MS SQL Server 2005 and 2008  NOTE: Do not use the "-" (dash) character, special characters, or embedded spaces or the installation will fail.

---

MySQL 5.5.12 or higher is now supported. You must have a jdbc driver installed. If you have not already downloaded the driver go to <http://dev.mysql.com/downloads/connector/j> and download 5.1.17 or higher.

---

Note that Rhythmyx does not perform any escaping or character conversion when inserting characters into the database. Therefore, the character encoding of the underlying database character set should match the encoding of the characters you want to store in the Repository. If the encoding of the database does not match the encoding used in Rhythmyx, some functionality may be lost. For example, if you use Microsoft Word as a Content Editor and Oracle as your database, Word SmartQuotes might not work if your database uses a character set other than UTF-8.

Percussion Software makes the following recommendations:

- Use UTF-8 if the majority of the characters you use match the ASCII character set. This is the recommended option for Western languages.
- Use UTF-16 if the majority of the characters you use fall outside of the ASCII character set. This is the recommended option for most Asian languages.

Non-Unicode character sets are not recommended for Rhythmyx.

---

# Installation Prerequisites

Before beginning installation, be sure to implement the following prerequisites.

## Prerequisites for Installation to Unix and Linux Environments

Before installing to a Unix environment, you will need to create a user to install and run Rhythmyx. If you run multiple instances of the Rhythmyx server, you must create a user for each instance.

You must install Rhythmyx from the root of the user's directory.

## Prerequisites for IBM DB2 (UDB)

When installing Rhythmyx, the installer requires tablespace with a page size of at least 8K. Smaller page sizes may result in installation errors. Create a bufferpool, tablespace, and temporary tablespace with a pagesize of at least 8K before installing Rhythmyx and grant appropriate privileges on this tablespace to the userID that will be used to install the repository.

To create the required tablespace:

- 1 In Windows, open the DB2 Command Line Processor; in Unix, open a terminal window and enter *db2*.
- 2 Connect to the database.
- 3 Create a bufferpool: enter *CREATE BUFFERPOOL POOLNAME SIZE 250 PAGESIZE 16K*.
- 4 Disconnect from the database.
- 5 Enter *DB2STOP*.
- 6 Enter *DB2START*.
- 7 Connect to the database.
- 8 Create the tablespace. Enter *CREATE TABLESPACE TABLESPACENAME PAGESIZE 16K MANAGED BY SYSTEM USING (PATH) BUFFERPOOL POOLNAME*.
- 9 Create the temporary tablespace. Enter *CREATE SYSTEM TEMPORARY TABLESPACE TABLESPACENAME PAGESIZE 16K MANAGED BY SYSTEM USING (PATH) BUFFERPOOL POOLNAME*.
- 10 Grant use of the tablespace to the Rhythmyx userID.

The recommended application heap size for Rhythmyx in DB2 is 2048 4 K pages. The default application heap size in DB2 is 128 4K pages. In the Database Configuration, change the value of the APPHEAPSZ parameter from *128* to *2048*. For additional information on recommended application heap sizes in DB2, see

<http://db2.mi.hdm-tuttgart.de/db2help/help/index.jsp?topic=/com.ibm.db2.udb.spatial.doc/cfgappheap.html>

To prepare to run DB2 using your Rhythmyx user:

- 1 Copy the DB2 instance profile (<DB2\_INSTANCE\_DIR>/sqllib/db2profile, where <DB2\_INSTANCE\_DIR> is the DB2 instance directory, such as /export/home/db2inst1 ) to the Rhythmyx user's home directory.
- 2 Add the following lines to the .profile file of the Rhythmyx user:

```
if [ -f /export/home/mylogin/db2profile ]; then
    . /export/home/mylogin/db2profile
fi
```

## Prerequisites For Upgrade from Rhythmyx Version 5.7 and Earlier

When upgrading from Rhythmyx Version 5.7 and earlier, you must modify any applications that have backend credentials defined locally. Rhythmyx now runs in a web application server container rather than acting as a Web server itself, and all security is provided by the container. Thus, local backend credentials are no longer valid and must be removed. If you attempt to install without removing local backend credentials, the installer will terminate with a warning message

An application includes local backend credentials if the Backend Data Access tab of the Application Security Settings dialog includes any entry in addition to or instead of Rhythmyx Repository.

## CHAPTER 2

# Installation

For upgrades and reinstallations:

- If you are upgrading or reinstalling the Rhythmyx Server or the Rhythmyx Repository Database, shut down the Rhythmyx Server and any running applications first.
- If you are upgrading or reinstalling a client component, shut down that component locally. You do not need to shut down the Rhythmyx Server.

Install the components in the following order:

- 1** Install the Repository Database from the CD-ROM. (Note: You cannot install the Server until you have installed the Repository Database, as the Server's programs and files depend on the tables in the Repository Database).
- 2** Install the Server from the CD-ROM.
- 3** Install the client components by browsing to the Server's web pages and downloading their installers.

---

Note: If you are evaluating Rhythmyx and want to install all Rhythmyx components onto the same machine in one installer use the Suite Installer from the CD-ROM.

---

---

## Installation Flow Charts

The following flow charts illustrate the installation sequence for Rhythmyx.

## New Installation

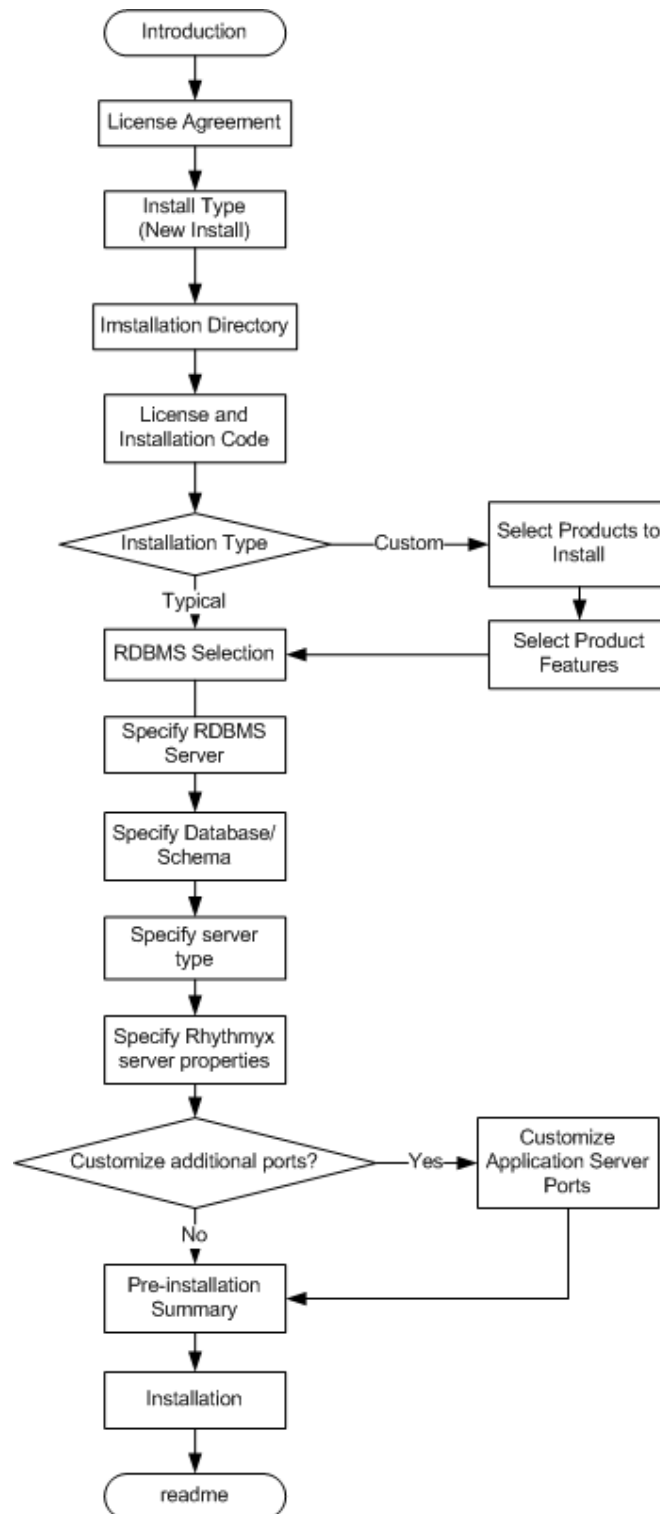


Figure 1: Installation Sequence

## Upgrade Installation

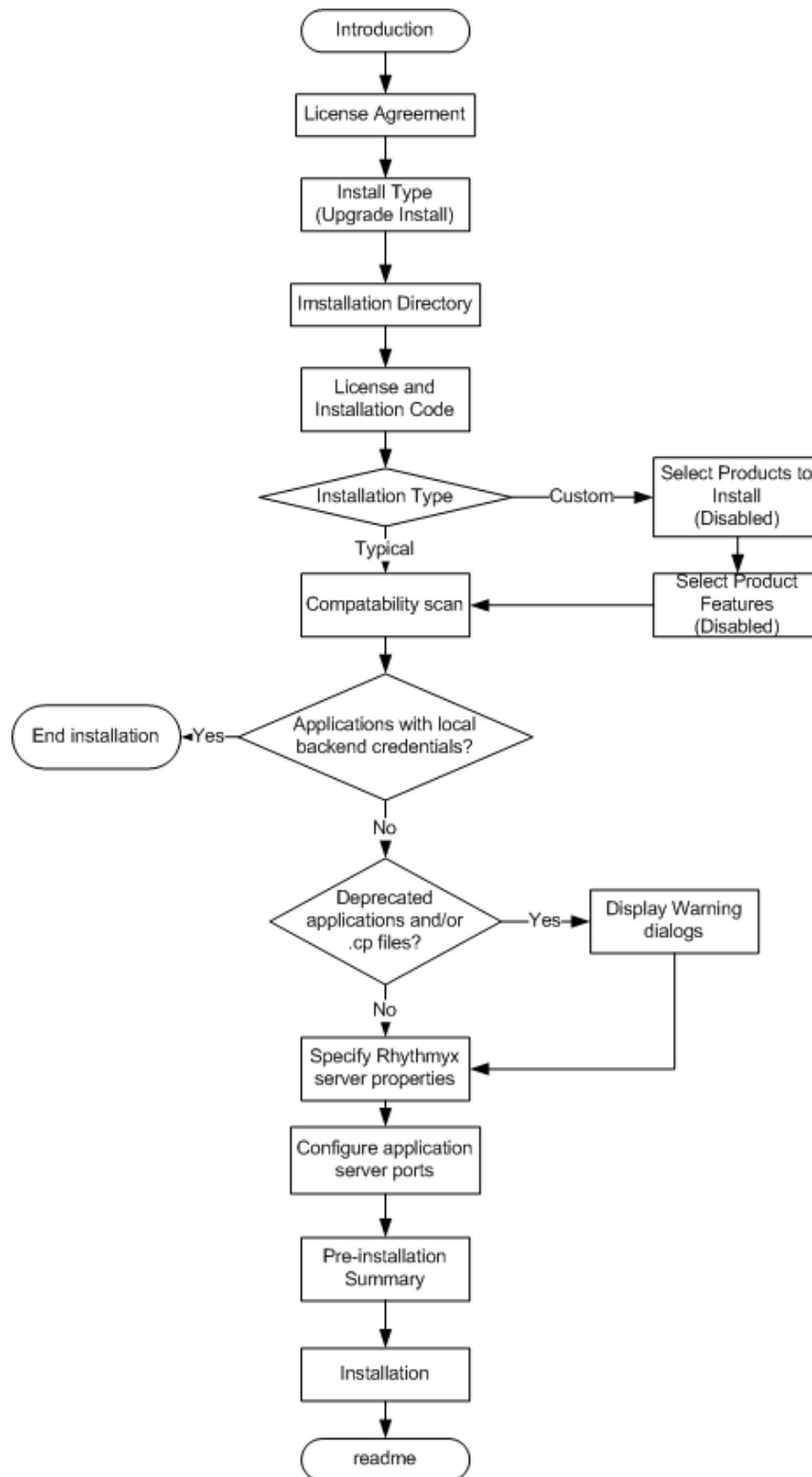


Figure 2: Upgrade installation sequence



---

## Starting Installations

The installation application and process you use depends on the components of the Rhythmyx system you are installing and the environment into which you are installing Rhythmyx.

When installing into Solaris or Linux, copy the contents of the DVD-ROM to a directory on the machine where you want to run the installation. (NOTE: The /resource directory MUST be included when copying files from the disk to the machine. If you do not include this directory, the installation will fail.) When installing to Windows in command-line mode, it may be more convenient to copy the contents of the DVD-ROM to the machine where you want to install Rhythmyx.

When installing to Solaris or Linux, the user performing the installation must be the owner of all files copied from the CD-ROM, must have read permissions on all installer files, and must have execute permissions on the setup script (setupui.sh or setupconsole.sh) that you want to run.

The directory for each operating system contains the setup installer, which installs the Rhythmyx server and repository.

You can launch the installer in either command line (terminal window) mode or using a graphic user interface. The command line installer provides more options for tracking and logging the installation process.

To launch the installer as a GUI in a Windows environment, browse to the Windows directory on the Rhythmyx CD-ROM and double-click on the installation application.

To launch the installer in Windows using command-line mode, open a Command Prompt window, change to the directory where the installation application is located, and enter setup.exe.

To launch the installer in Linux or Solaris, change to the directory where the installer files reside, and run the shell script for the mode you wish to use. To run in command line mode use SetupConsole.sh. To run the installer as a graphic user interface use SetupUI.sh.

## Installing Remote Client Components

You can install the Developer Tools as a remote client on Microsoft Windows operating systems. (Installing as a remote client on other operating systems is not certified.) To install the Developer Tools as a remote client, start a Web browser and enter:

```
server:port/Rhythmyx/Administration/DeveloperTools/install.htm
```

Where:

- *server* is the name or IP address of the Rhythmyx server machine;
- *port* is the port the Rhythmyx server listens on;

For example:

```
FastForward:9992/Rhythmyx/Administration/DeveloperTools/install.htm
```

---

## Installation Sequence

All Rhythmyx components follow a similar installation sequence, whether installed from the CD-ROM, Suite Installer or browser.

## Welcome and Product Licensing

The first phase of the installation wizard is welcoming and product licensing. When you start the installation wizard, it displays welcoming information:

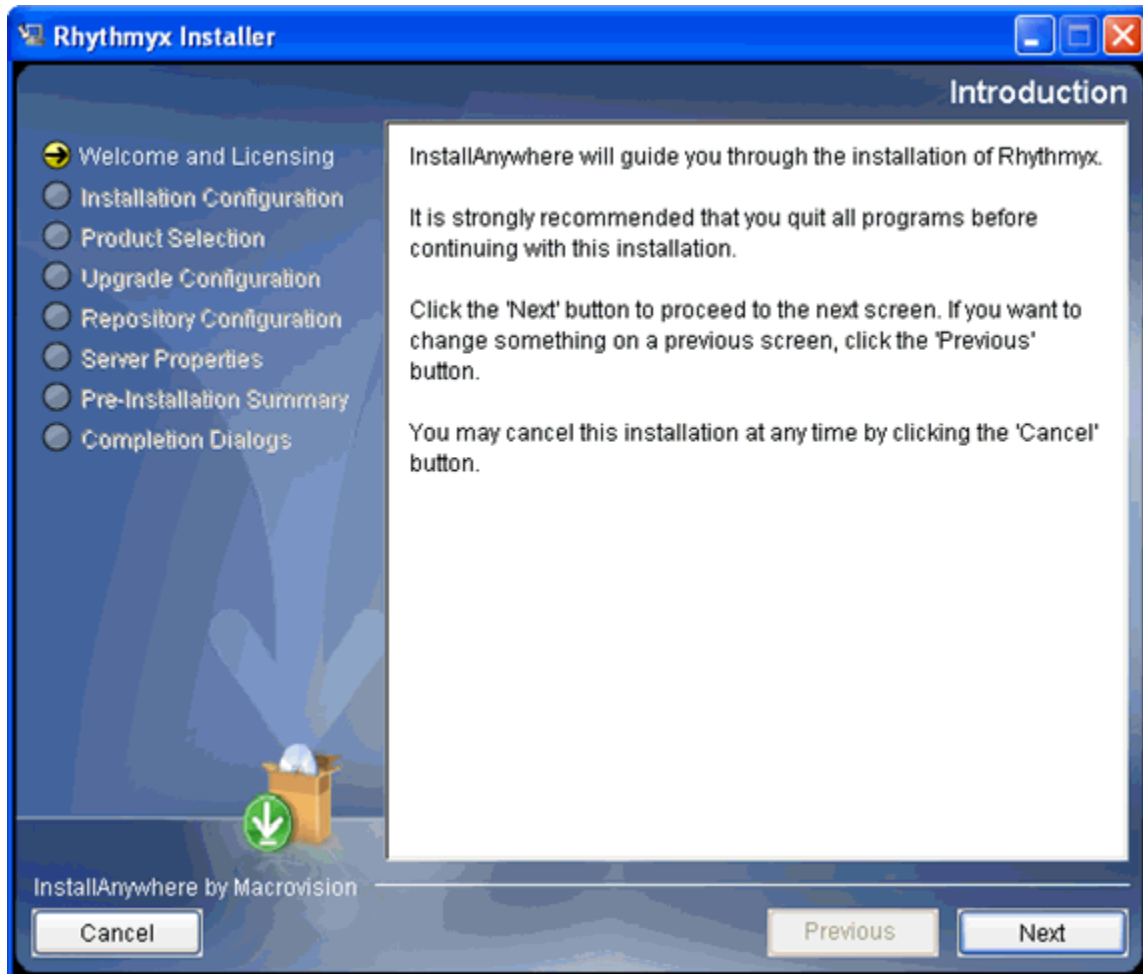


Figure 3: Installation window

```
InstallAnywhere will guide you through the installation of Rhythmyx.
It is strongly recommended that you quit all programs before continuing with
this installation.

Respond to each prompt to proceed to the next step in the installation. If you
want to change something on a previous step, type 'back'.

You may cancel this installation at any time by typing 'quit'.

PRESS <ENTER> TO CONTINUE:
```

Figure 4: Command-line welcome text

To proceed,

- in the graphic installation wizard, click the [Next] button;
- in the command-line installation wizard, press the <Enter> key.

Also note two additional options in the command-line wizard:

- To go back to the previous step in the wizard, enter "back". Note that this string can include any mix of upper- and lower-case characters.
- To end the installation wizard at any time, enter "quit". Note that this string can include any mix of upper- and lower-case characters.
- Where a list of options is available, the default options is indicated by an arrow (->). Pressing the <Enter> key without entering an option accepts the default option.

The installation wizard now displays the License Agreement.

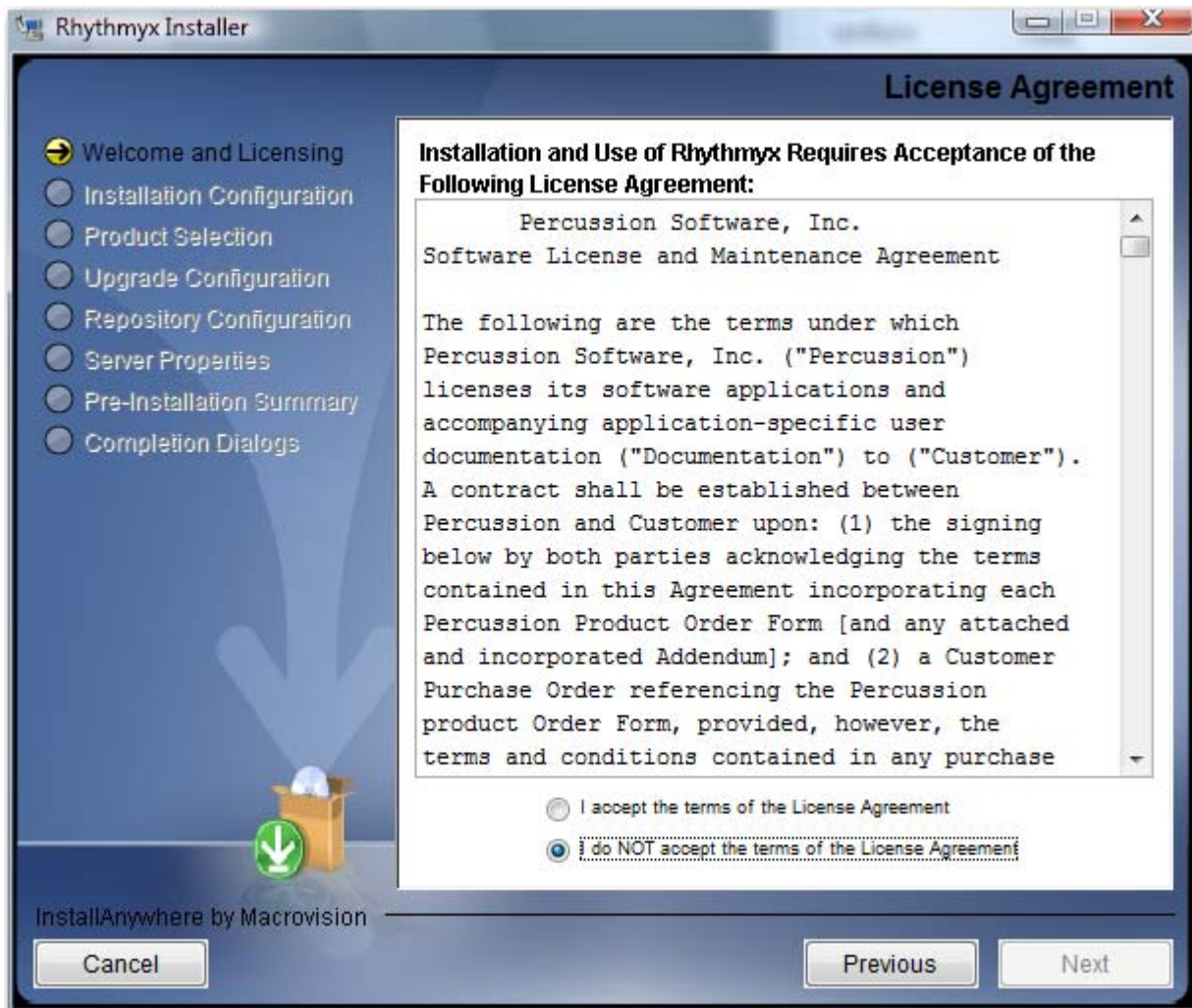


Figure 5: License Agreement

```
SOFTWARE LICENSE AND SUPPORT AGREEMENT

This Software License and Support Agreement (the "Agreement")
establishes the terms and conditions regarding the licensure
and use of Rhythmyx software products, support, and
accompanying documentation.

1.      Definitions of Terms Used:

A. "PERCUSSION" means PERCUSSION Software, Inc. and
subsidary, the owner or licensor of the Software
licensed hereunder.
B. "LICENSEE" means the individual or the business
entity licensing the copy of the Software described
in this Agreement, as evidenced by an appropriate
purchase order and delivery of Software by
PERCUSSION. Only those persons in LICENSEE's
organization having a need to use the Software in
the normal course of their employment are authorized
to use the Software in the operation of the business
of LICENSEE under the terms of this Agreement.
C. "Product" means the Software specified in a
purchase order from LICENSEE and accepted by

PRESS <ENTER> TO CONTINUE: █
```

*Figure 6: Command-line license agreement*

Read the license agreement.

- In the graphic installation wizard, scroll through the agreement.
- In the command-line wizard, press the <Enter> key when you finish reading each screen.

To accept the license agreement:

- in the graphic installer, select the I accept the terms of the license agreement radio button and click the Next button;
- in the command line installer, enter "Y" (upper- or lower-case) and press the <Enter> key to accept the license agreement and continue with the installation.

## Installation Configuration

The second phase of the installation wizard is installation configuration. During this phase you specify whether you are performing a new installation or an upgrade, and define the installation location.

After you accept the license agreement, the wizard proceeds to installation type configuration. Options are new installation and upgrade installation.

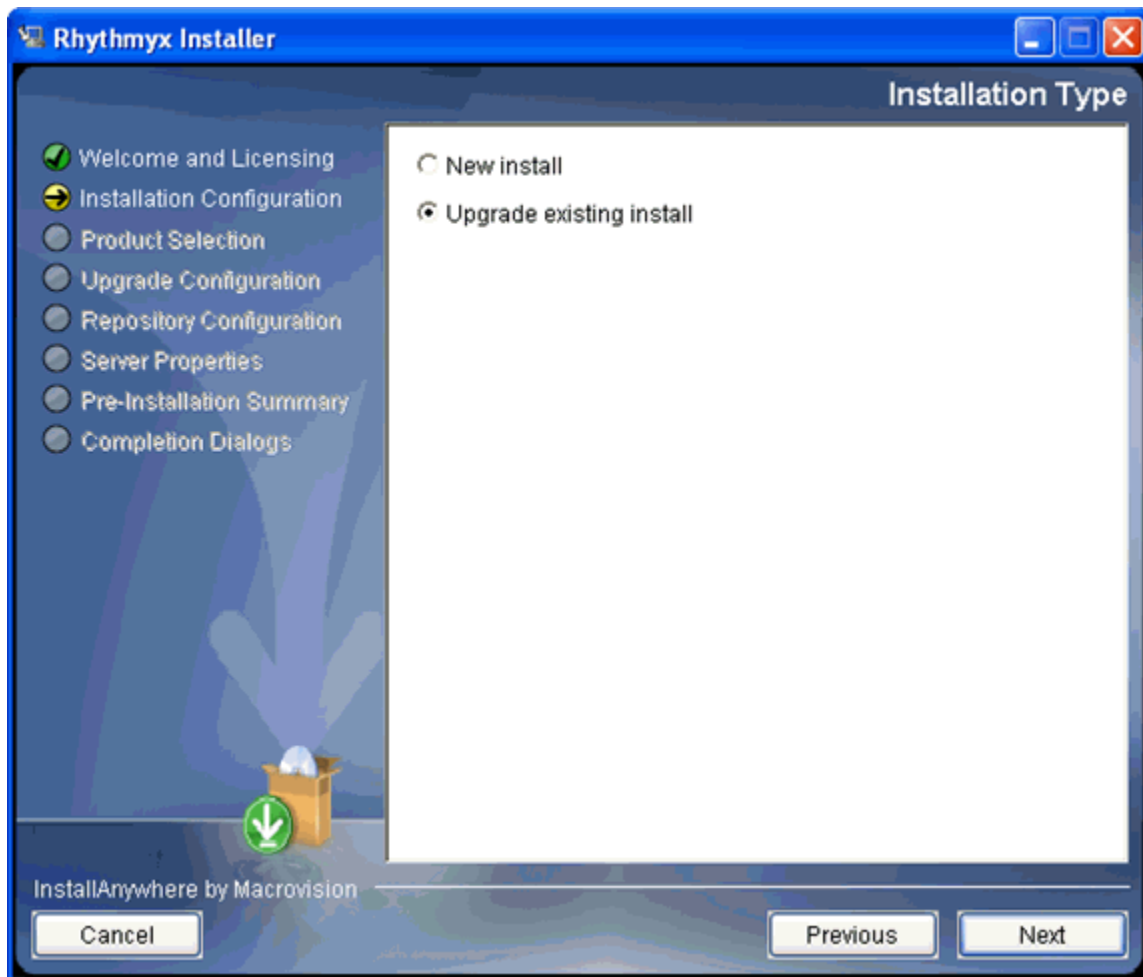


Figure 7: Installation type

```

Installation Type
-----
1- New install
->2- Upgrade existing install
Enter one of the options above: █
  
```

Figure 8: Command-line installation type

To specify the type of installation:

- in the graphic installation wizard, select the radio button for the type of installation you are performing, then click the **[Next]** button to continue with the wizard.

- in the command-line installation wizard enter
  - 1 to perform a new installation;
  - 2 to perform an upgrade installation (default option).

Press the <Enter> key to continue with the wizard.

The next step in the wizard is to configure the installation directory.

- When performing a new installation, the default location for the installation is:
  - C:\Rhythmyx in Windows

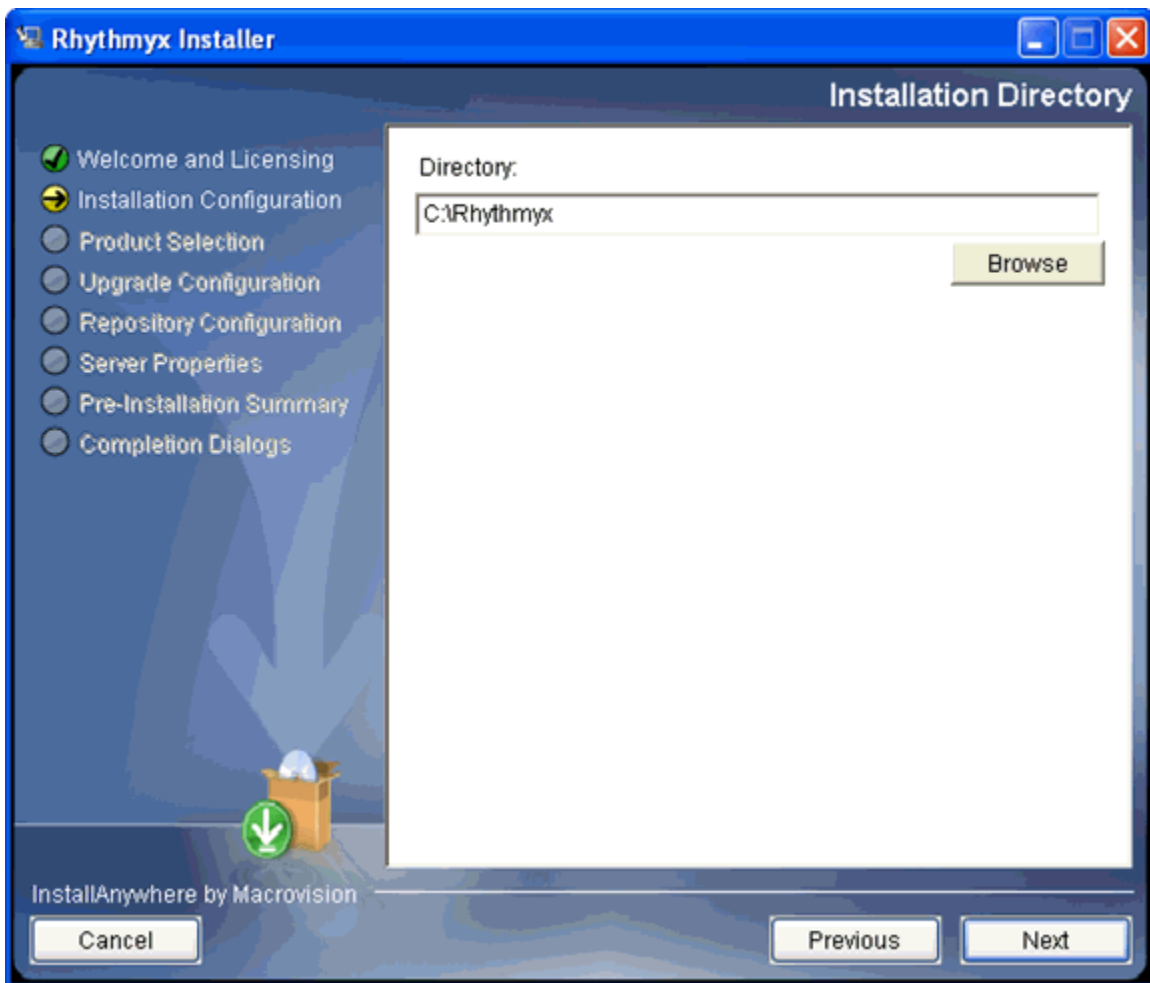


Figure 9: Installation directory

- /Rhythmyx. (in Unix and Linux).

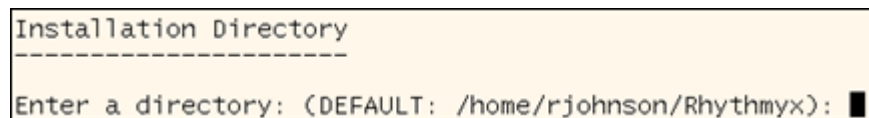


Figure 10: Default location for Unix and Linux in command-line mode

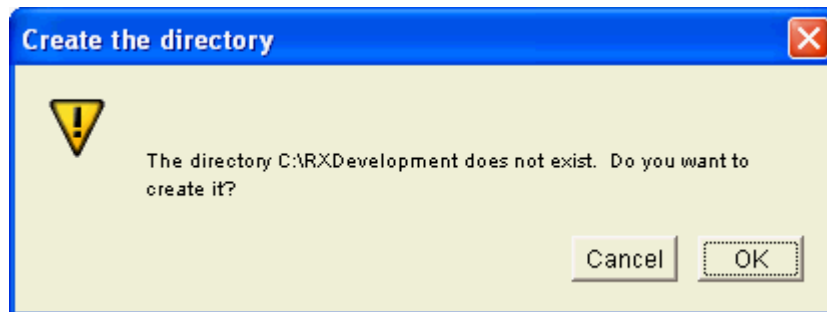
In a new Installation, to change the installation location:

- in the graphic installation wizard, enter the path in the **Location** field, or use the **[Browse]** button to browse to the new location;
- in the command-line wizard, enter the new path.

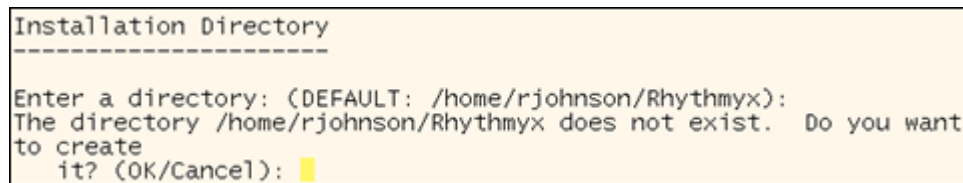
In a new Installation, to accept the location

- in the graphic installation wizard, click the **[Next]** button;
- in the command-line installation wizard, press the <Enter> key.

If you have specified a location that does not already exist, the installation wizard confirms that you want to create a new directory for the installation.



*Figure 11: Creation confirmation dialog*



*Figure 12: Create directory in command line wizard*

To create the new directory:

- in the graphic installation wizard, click the **[OK]** button;
- in the command-line wizard, press the <Return> key.



If the specified location already contains a Rhythmyx installation, the wizard informs you that it will perform an upgrade.

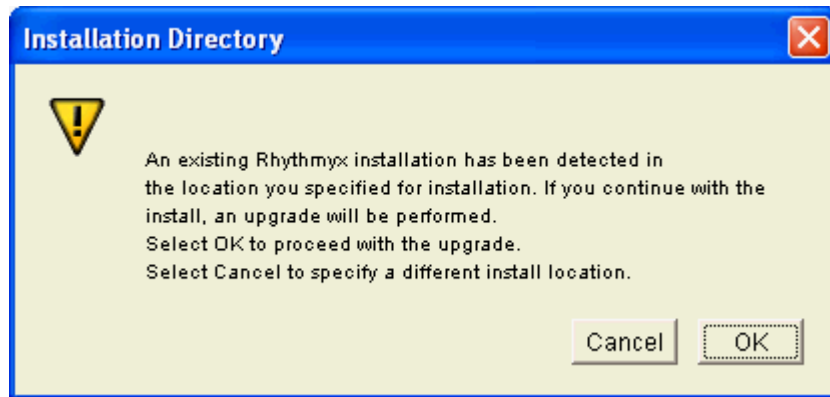


Figure 13: Installation upgrade confirmation

```

Installation Directory
-----
Enter a directory: (DEFAULT: /home/rjohnson/Rhythmyx): /home/rjohnson/RxAlt
An existing Rhythmyx installation has been detected in
the location you specified for installation. If you continue
with the
install, an upgrade will be performed.
Select OK to proceed with the upgrade.
Select Cancel to specify a different install location. (OK/Cancel)
:

```

Figure 14: Installation message in command-line wizard

If you do not want to upgrade the installation:

- in the graphic installation wizard, click the [**Cancel**] button and specify a different directory;
- in the command-line wizard, enter "cancel" (any combination of upper- and lower-case characters) and press the <Enter> key; the installation wizard returns to installation directory configuration.
- When performing an upgrade, click the drop arrow in the **Directory** field and choose the installation you want to upgrade.

If you are performing a new installation, the next phase of the installation wizard is **Product Selection** (see page 26). If you are performing an upgrade, the next phase of the installation wizard is **Upgrade Configuration** (see page 31).

## Product Selection

The third phase of the installation wizard is product selection. During this phase you enter your license number and installation codes and specify the Rhythmyx elements you want to install.

After you specify the installation location, the wizard requests your license number and installation code. These codes are printed on the jacket of the Rhythmyx installation disk.

- The graphic installation wizard displays a dialog where you can enter these codes. Enter the codes in the appropriate fields, and click the **[Next]** button to continue.

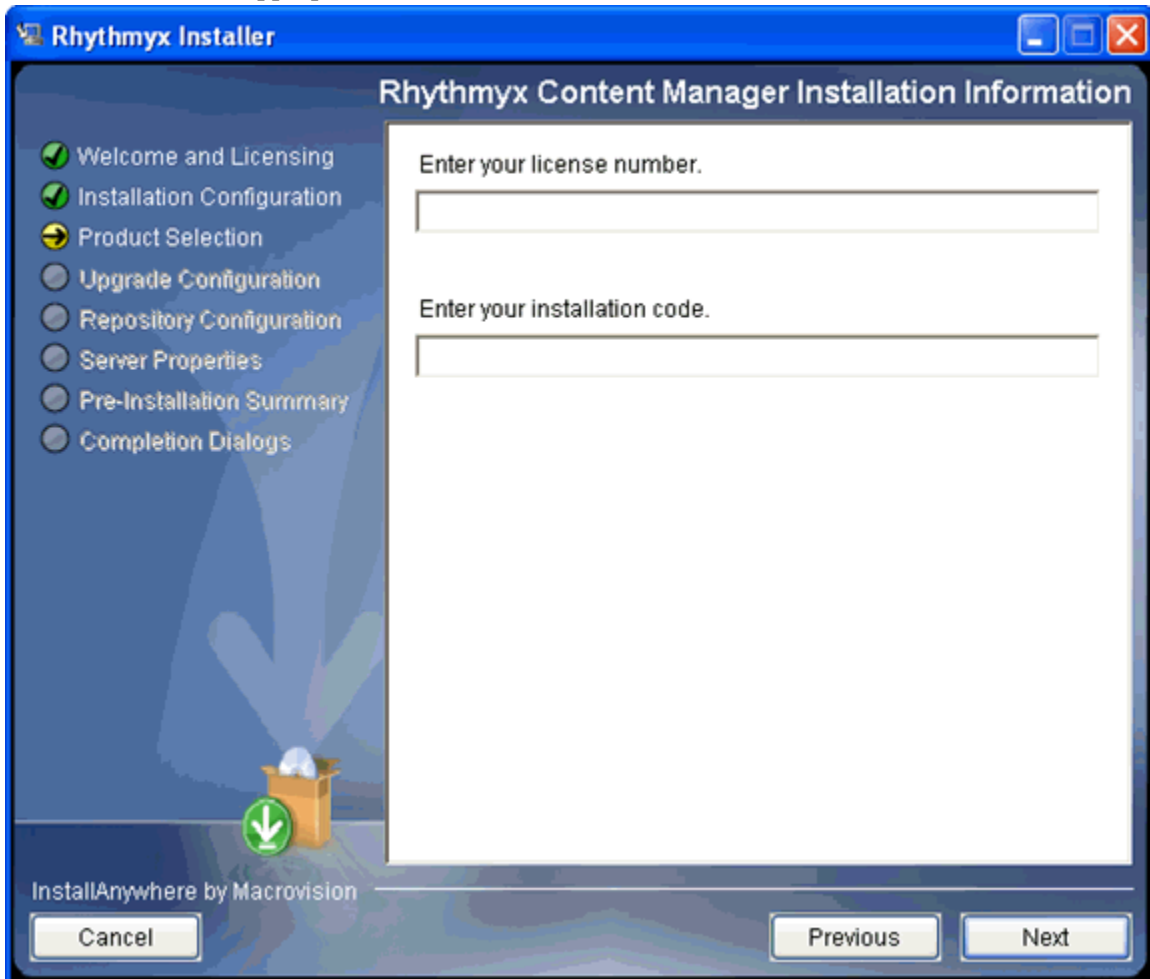


Figure 15: Installation information

If either code is invalid the wizard displays an error dialog detailing the error. Correct the error to continue.

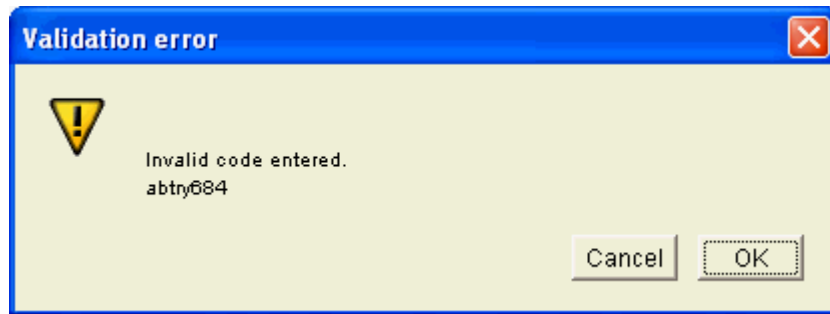


Figure 16: Invalid code dialog

- The command line wizard requests each code individually. Enter the requested code.

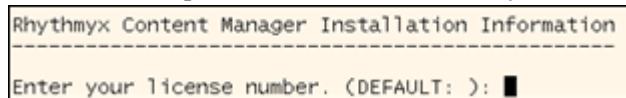


Figure 17: Entering the Rhythmyx license code in the command-line wizard.

If either of the codes you enter is invalid, the wizard returns an error message. Enter a valid code to continue with the installation.

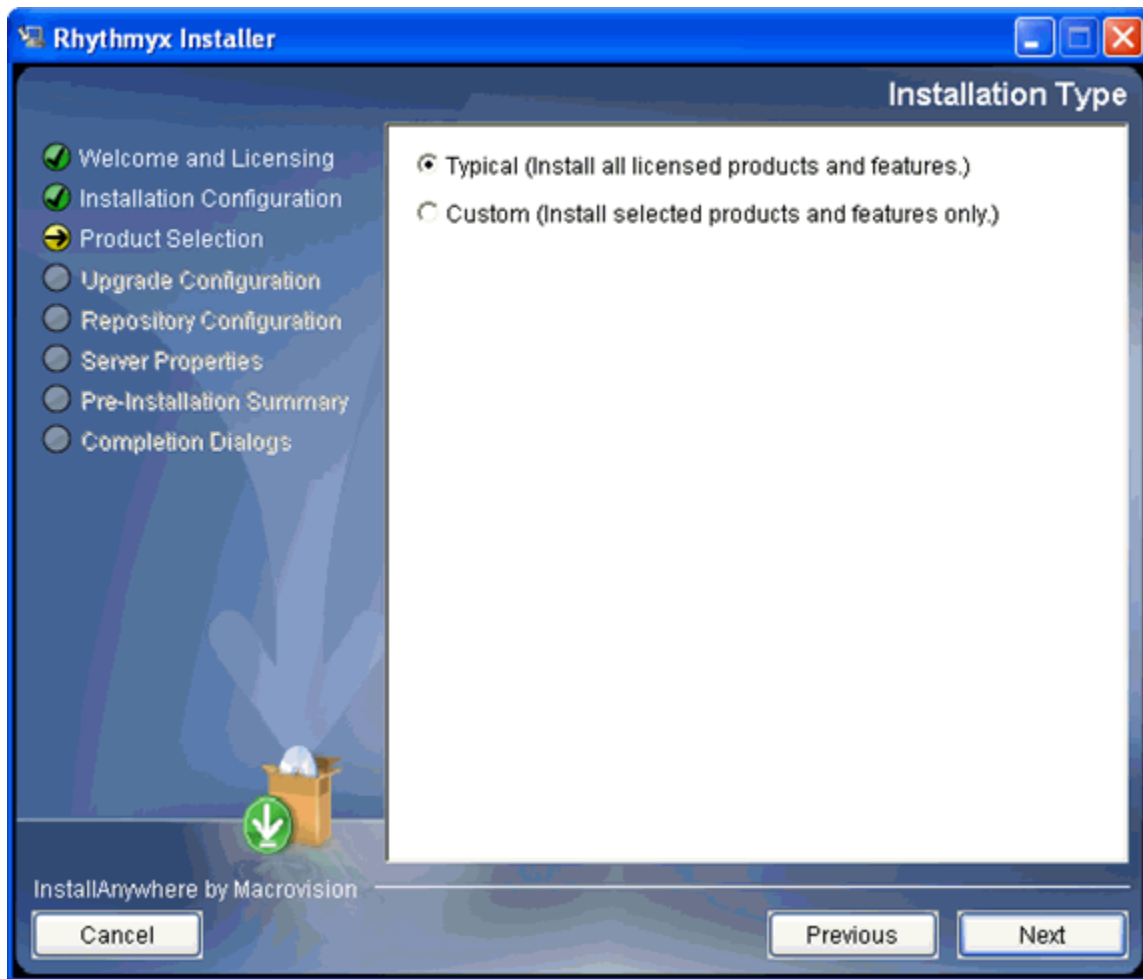


Figure 18: License code error in command-line wizard

Next, specify the installation type. Options include:

- Typical  
All elements will be installed.
- Custom  
Only specified installation elements will be installed.

The graphic installation wizard displays the Installation Type dialog.



*Figure 19: Installation type*

- To install all Rhythmyx elements, select the **Typical** radio button and click the **[Next]** button to continue the installation.
- To select the Rhythmyx elements you want to install, select the **Custom** radio button. When you click the **[Next]** button, the wizard displays a series of dialogs listing Rhythmyx elements you can install. To install a Rhythmyx element, check the box next to the element. In the example below, all elements are checked.

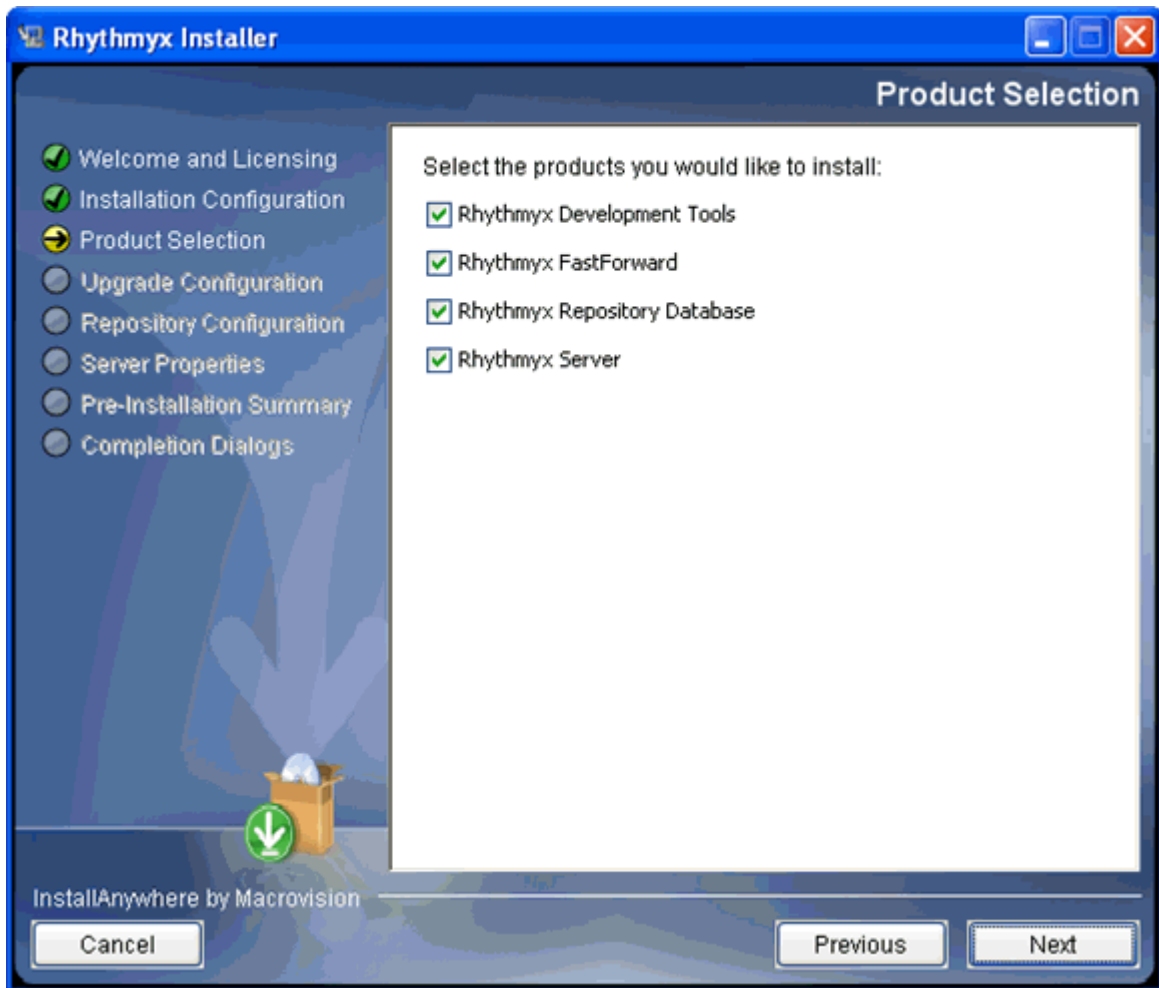


Figure 20: Custom installation

NOTE: On an upgrade installation, the options you currently have installed are disabled on the custom configuration dialogs are disabled. These options will be upgraded by default.

Click the [**N**ext] button on the dialog to accept the options you selected. Continue through all of the pages of options. Some options have pre-requisites. If you attempt to install an option without a required prerequisite, the wizard displays an error message.

The command line wizard asks you to specify the installation type.

```
Installation Type
-----
->1- Typical (All licensed products and features will be
installed.)
 2- Custom (Only selected products and features will be
installed.)
Enter one of the options above: █
```

Figure 21: Specify installation type in command-line wizard

- To install all Rhythmyx elements, accept the default option (1).

- To select the Rhythmyx elements you want to install, enter 2 and press the <Enter> key. The installation wizard displays a series of configuration options:

```
Product Selection
-----
->1- Rhythmyx FastForward
->2- Rhythmyx Repository Database
->3- Rhythmyx Server
Select the products you would like to install: █
```

*Figure 22: Example installation configuration options*

Arrows indicate selected options. To change selected options, enter the numeric values in a comma-separated list. For example, to install only the Repository and server but not FastForward in the illustration above, enter 2,3. Press the <Enter> key to accept your configuration.

A new installation continues with **Repository Configuration** (see page 36).

## Upgrade Configuration

Upgrade configuration occurs only during upgrade installations, and follows Product Selection. During this phase, the installation wizard scans your system for the following:

- Rhythmyx applications with local backend credentials (only occurs on systems upgraded from Rhythmyx Version 5.7)
- deprecated system applications
- .cp files (only occurs on systems upgraded from Rhythmyx Version 5.7)

The installation wizard also allows you to configure purging of records from the PUBDOC table.

If the installation wizard detects Rhythmyx applications with local backend credentials, it displays the following message:

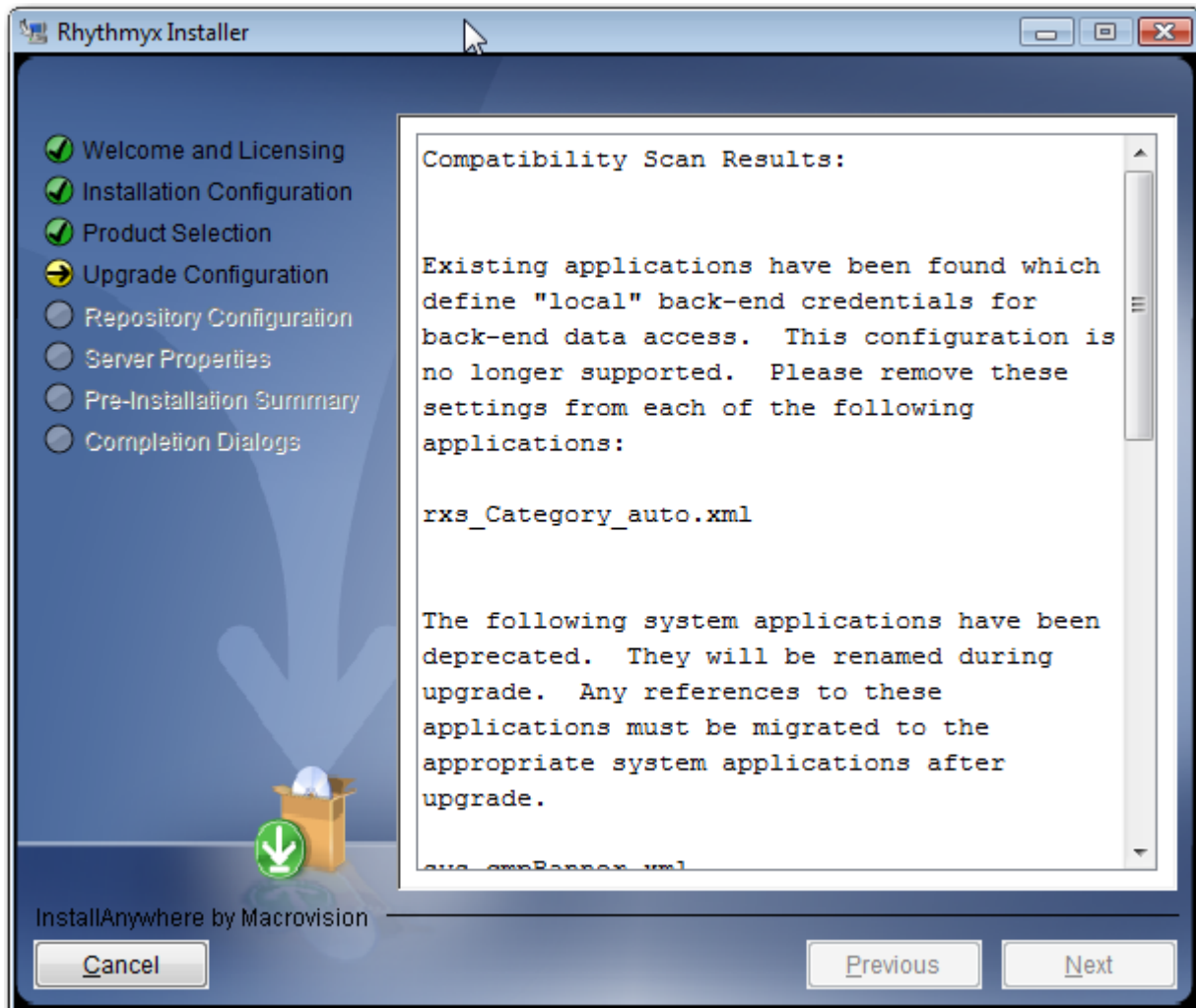


Figure 23: Installation wizard message when local backend credentials are detected

```
Existing applications have been found which define "local" back-end credentials
for back-end data access. This configuration is no longer supported. Please
remove these settings from each of the following applications:

rxs_Category_auto.xml
```

Figure 24: Installation wizard message when local backend credentials are defined, in command line mode

If the installation wizard displays this message, you cannot proceed. You must cancel the installation and remove any locally-defined backend credentials in your implementation. Note that the dialog specifies which applications include locally-defined backend credentials.

If the installation wizard detects deprecated system applications, it displays the following message:

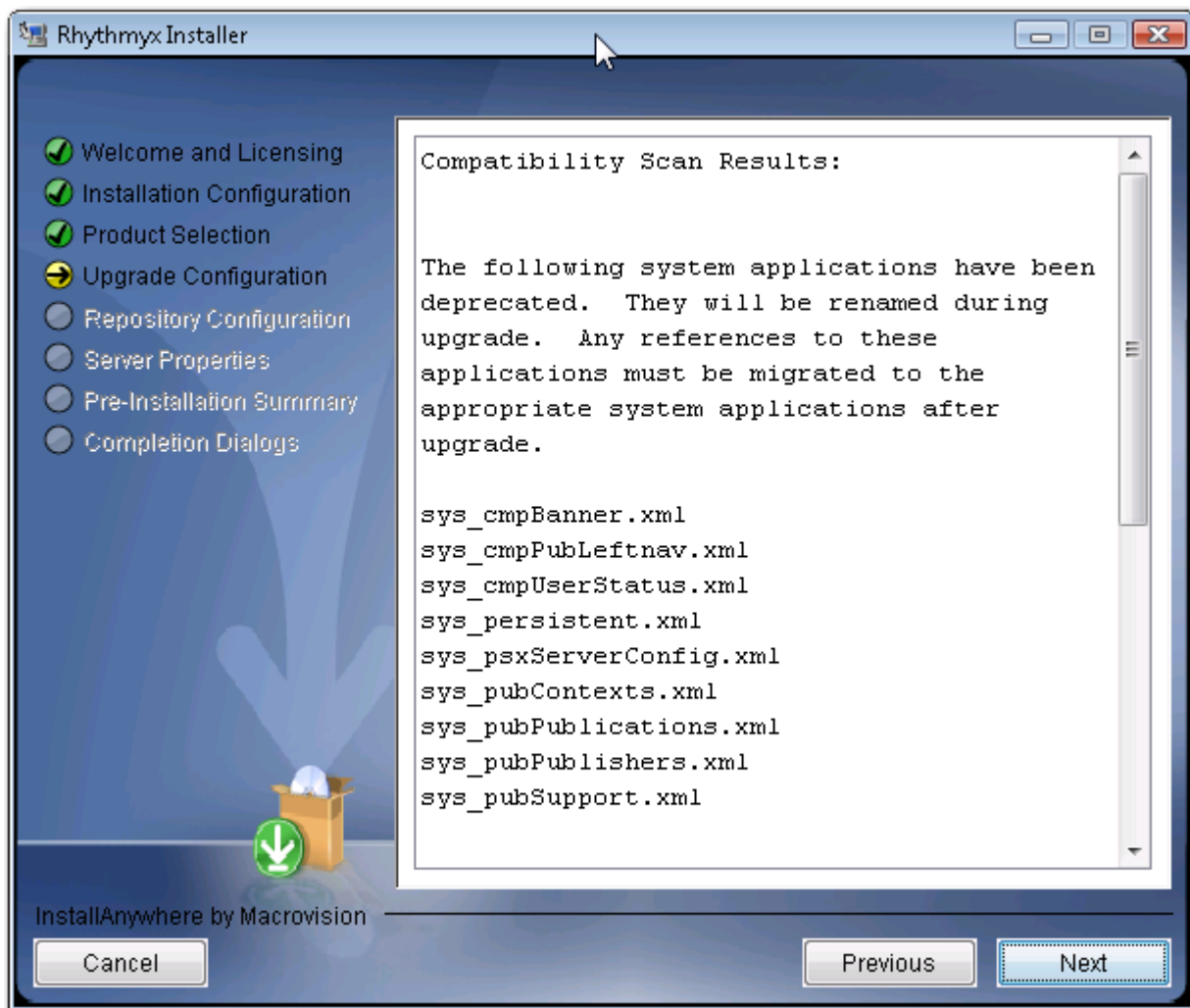


Figure 25: Command-line installation wizard message when deprecated system applications are detected



```
The following system applications have been deprecated. They will be renamed
during upgrade. Any references to these applications must be migrated to the
appropriate system applications after upgrade.

sys_cmpBanner.xml
sys_cmpPubLeftnav.xml
sys_cmpUserStatus.xml
sys_persistent.xml
sys_psxServerConfig.xml
sys_pubContexts.xml
sys_pubPublications.xml
sys_pubPublishers.xml
sys_pubSupport.xml

For questions or concerns, please reference the "Installing_Rhythmyx.pdf"
document, or contact:

North America Support
9:00 AM to 6:00 PM ET, Monday-Friday
```

*Figure 26: Command-line installation wizard message when deprecated system applications are detected*

These applications are renamed during upgrade processing. You must update any code references to these applications.

During the upgrade, the RXPUBDOCS table, stores metadata describing the published output of Content Items, is modified. Processing this table can take a long time, so the installation wizard provides the option of purging records prior to a specified date. Any records prior to the date you specify will be purged from the system and permanently removed from the Repository, so you will not be able to access details of Publication logs (although the logs themselves will still be available). Enter the latest date for which you want to preserve the data in RXPUBDOCS.

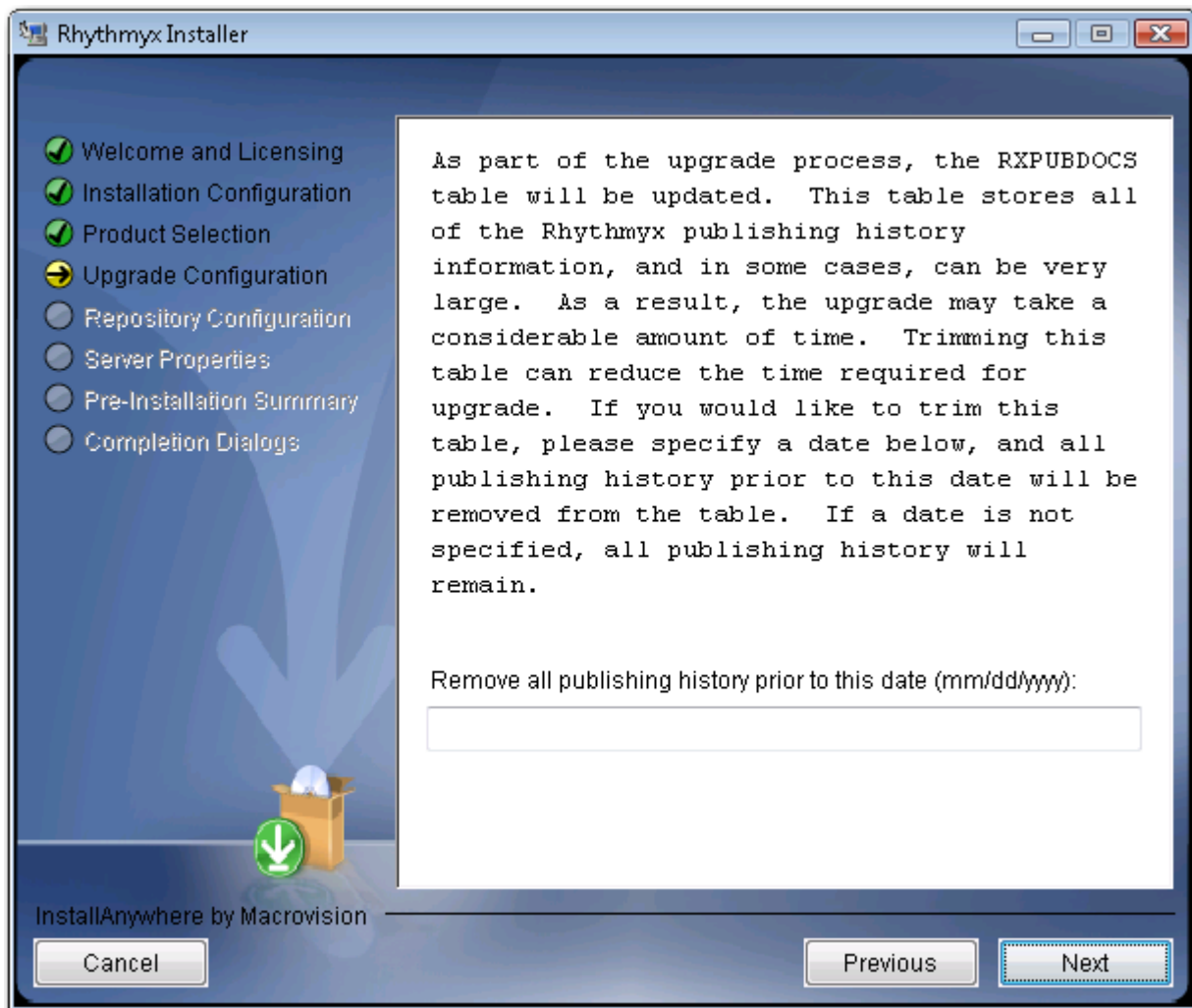


Figure 27: Purge RXPUBDOCS dialog

```

As part of the upgrade process, the RXPUBDOCS table will be updated. This
table stores all of the Rhythmyx publishing history information, and in some
cases, can be very large. As a result, the upgrade may take a considerable
amount of time. Trimming this table can reduce the time required for upgrade.
If you would like to trim this table, please specify a date below, and all
publishing history prior to this date will be removed from the table. If a
date is not specified, all publishing history will remain.
Remove all publishing history prior to this date (mm/dd/yyyy): (DEFAULT: )
: 

```

Figure 28: Purge RXPUBDOCS dialog in command-line mode

If the installation wizard detects any .cp files, it displays the following message:

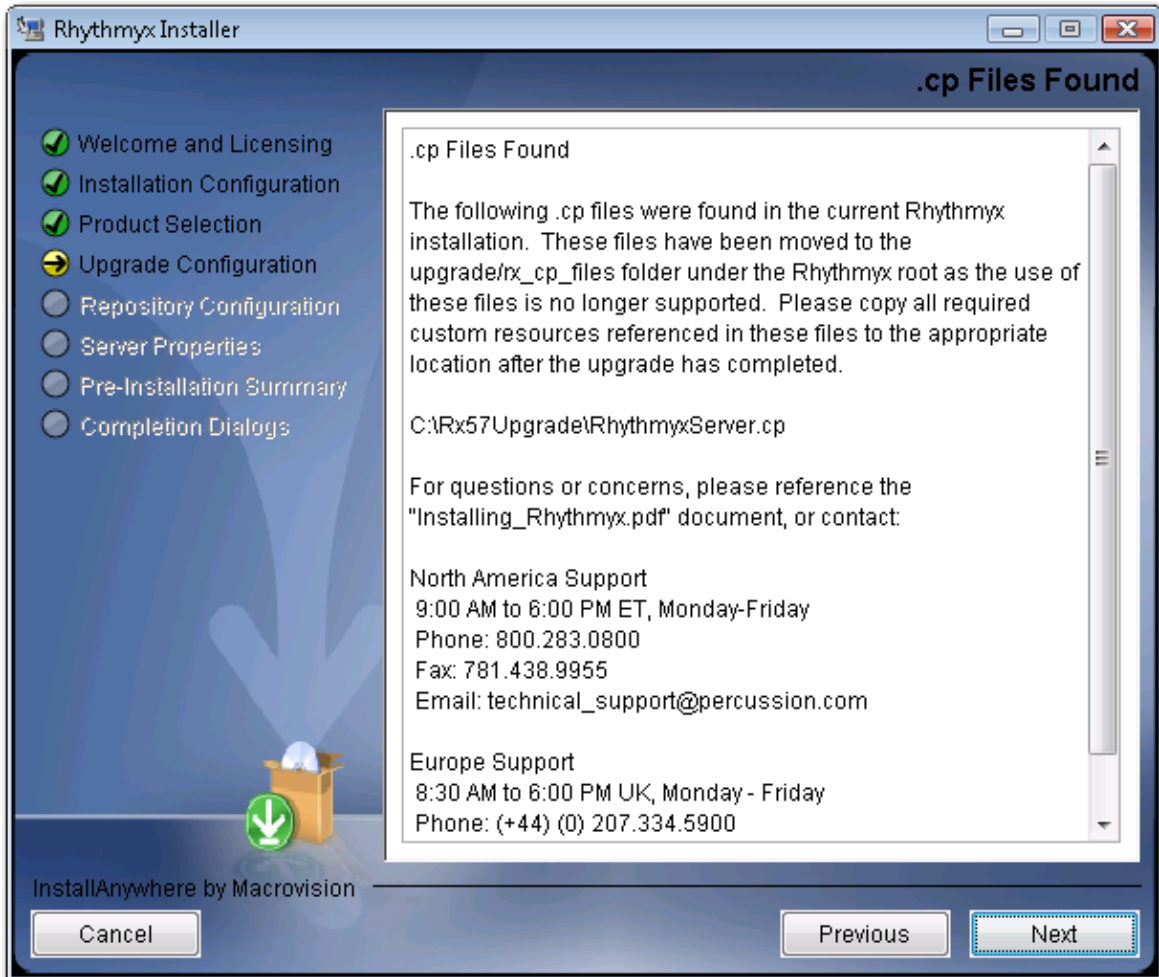


Figure 29: Installation wizard message when .cp files are detected

```
The following .cp files were found in the current Rhythmyx installation. These
files have been moved to the upgrade/rx_cp_files folder under the Rhythmyx root
as the use of these files is no longer supported. Please copy all required
custom resources referenced in these files to the appropriate location after
the upgrade has completed.

/qa/Rx57Upgrade/RhythmyxServer.cp

For questions or concerns, please reference the "Installing_Rhythmyx.pdf"
document, or contact:

North America Support
9:00 AM to 6:00 PM ET, Monday-Friday
Phone: 800.283.0800
Fax: 781.438.9955
Email: technical_support@percussion.com
```

Figure 30: Command-line installation wizard message when .cp files are detected

## Repository Configuration

The next phase of the installation wizard is repository configuration. This phase follows production select for a new installation and upgrade configuration for an upgrade installation. During this phase of the installation wizard, you specify the database to use for the Rhythmyx Repository.

The first step in Repository configuration is to specify the JDBC driver for the Repository RDBMS. Options include

- jtds: SQL Server ((Microsoft SQL Server)
- Oracle:thin
- db2

To specify the JDBC driver

- in the graphic installation wizard, choose the JDBC driver from the drop list, and click the [Next] button to accept your choice;

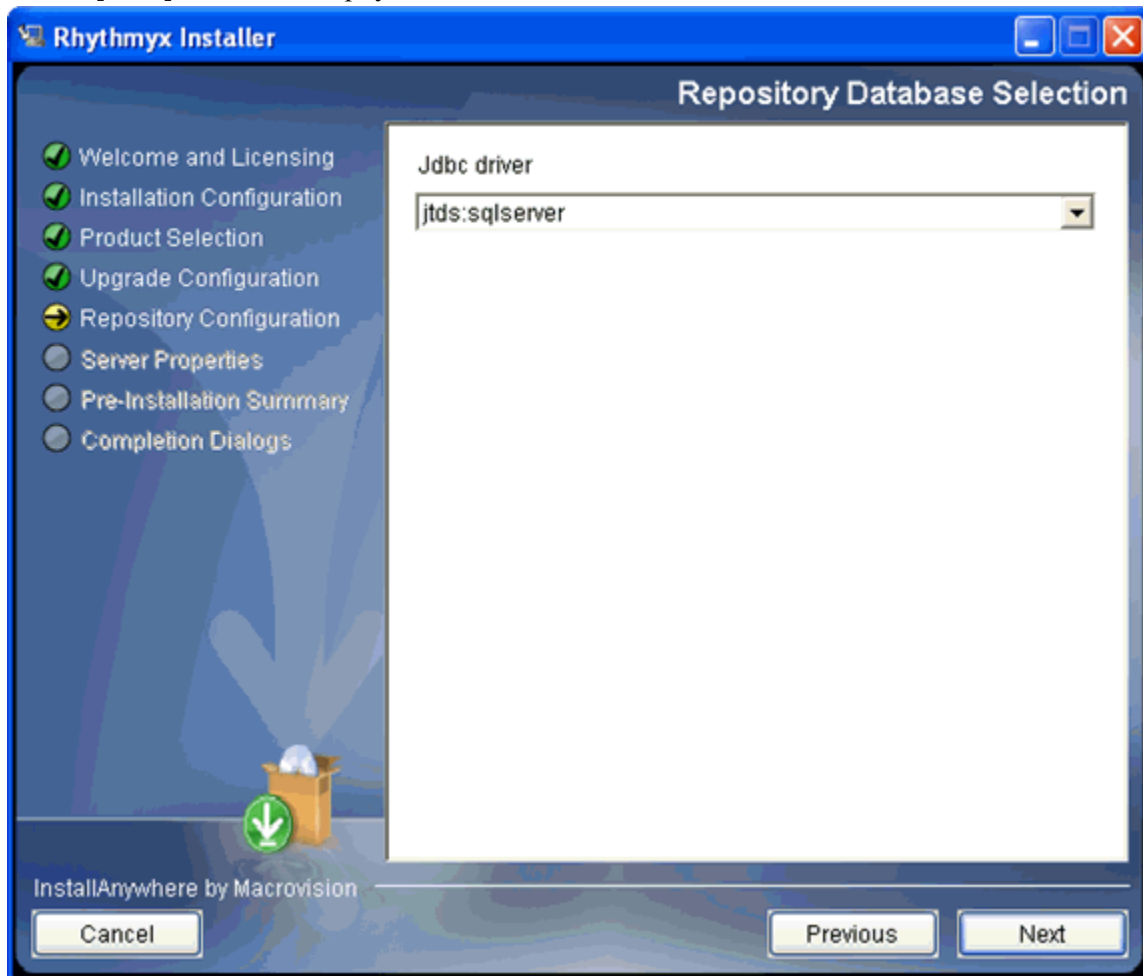


Figure 31: Repository database selection dialog

- in the command-line wizard, enter the ID that corresponds with the JDBC driver used to connect to your RDBMS:

ID	Driver	RDBMS
1	jtds:sqlserver	Microsoft SQL Server
2	oracle:thin	Oracle
3	db2	DB2 (UDB)

```
Repository Database Selection
-----
->1- jtds:sqlserver
   2- oracle:thin
   3- db2
Jdbc driver: █
```

Figure 32: Specifying the JDBC driver in the command-line wizard

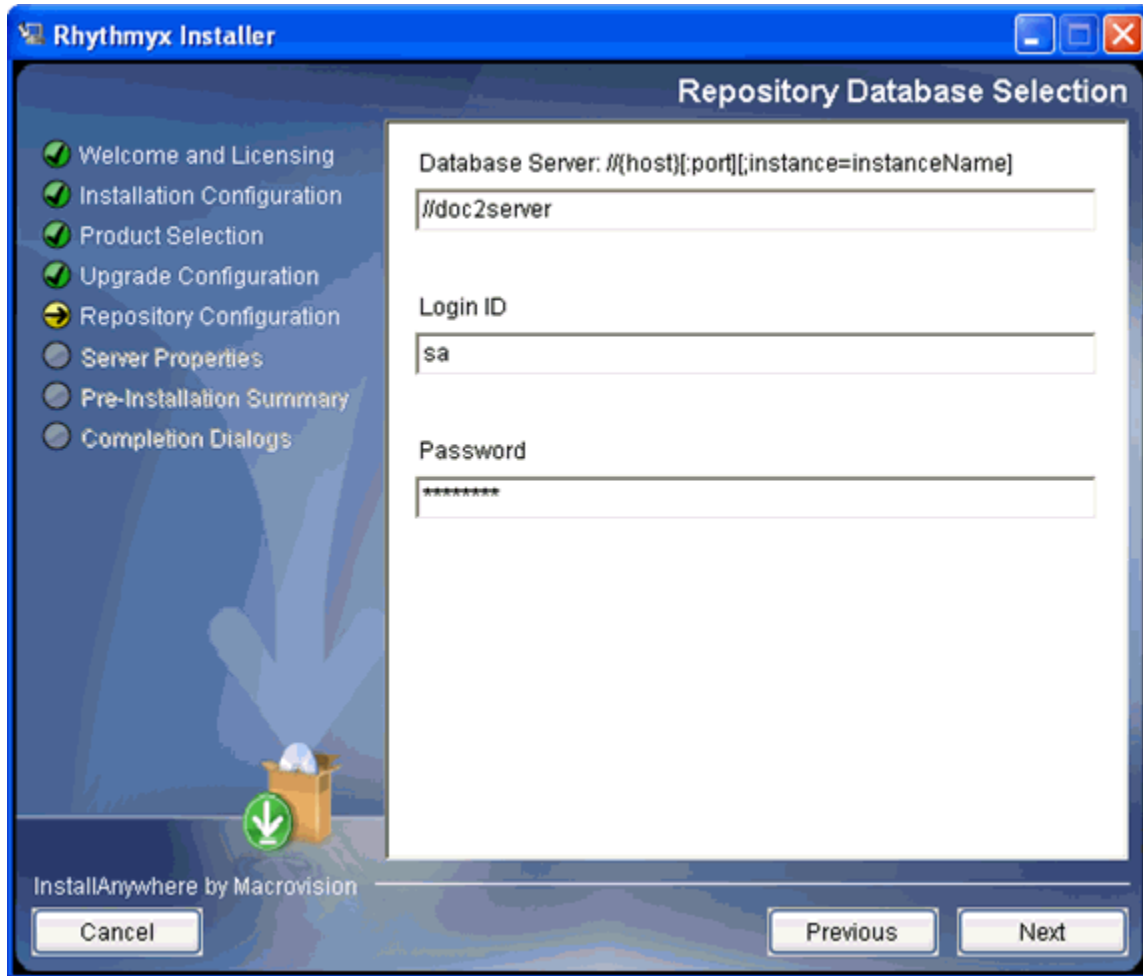
Note that you can only enter one ID. If you enter multiple IDs, the system does not accept your response and displays the request again.

The next step is to specify the connection data for the database. Connection data includes the connect string, and the user ID and password that the Rhythmyx server will use to connect to that server. The following table illustrates the syntax of the connect string for each RDBMS.

Driver	Syntax	Sample
Oracle	@<server>:<port>:<SID>	@255.255.255.36:1521:ORCL
jtds	<://server>:<port>(;instance=instanceName)	//dbserver: //dbserver:50000;instance=Rhythmyx
DB2 (UDB)	jdbc:db2://server<:port>/<database>	jdbc:db2://DB2Host<:50000>/<rxmaster>

To specify the connection data:

- in the graphic installation wizard, enter the connect string in the Database server field, and enter the User ID and Password that Rhythmyx will use to connect to the database server, then click the [Next] button to continue;



*Figure 33: Repository database selection*

- in the command-line wizard
  - enter the connect string and press the <Enter> key;
  - enter the login user that Rhythmyx will use to connect to the database server and press the <Enter> key;

- enter the password for the user you specified.

```
Repository Database Selection
-----
Database Server: @{host}:{port}:{sid} (DEFAULT: @demo:1521:ORCL)
: @demo:1521:demo
Login ID (DEFAULT: ): admin
Password (DEFAULT: ): demo
```

Figure 34: Specifying the RDBMS connection in the command-line wizard

Press the return key when you have defined all required connection data.

If any of the data is incorrect, the installation wizard returns an error message:

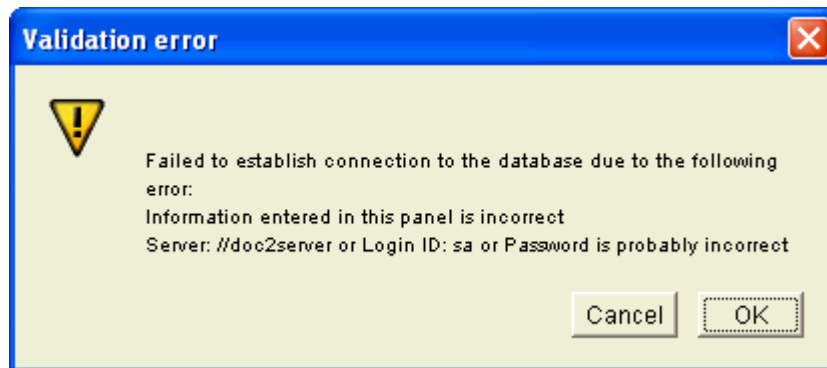


Figure 35: Validation error message

```
Repository Database Selection
-----
Database Server: @{host}:{port}:{sid} (DEFAULT: @demo:1521:ORCL)
: @demo:1521:demo
Login ID (DEFAULT: ): admin
Password (DEFAULT: ): demo
Failed to establish connection to the database due to the following error:
Information entered in this panel is incorrect
Server: @demo:1521:demo or Login ID: admin or Password is probably
incorrect (OK/Cancel): OK
```

Figure 36: Database specification error in command-line wizard

The final step in Repository configuration is to specify the database or schema used for the Rhythmyx Repository and name the datasource.

- In the graphic installation wizard
  - when installing the Repository to Oracle or DB2, select the **Schema** for the Repository (options include all schemas defined in the instance);
  - when installing the Repository to SQL Server, select the **Owner** for the Repository (options include all database owners defined on the server) and the **Database** to which the Repository will be installed (options include all databases defined in the instance);

- in all cases, specify the name of the Datasource the server will use to connect to the database; the default name of the datasource is *Rhythmyx Data*, but you can change it to any other name.

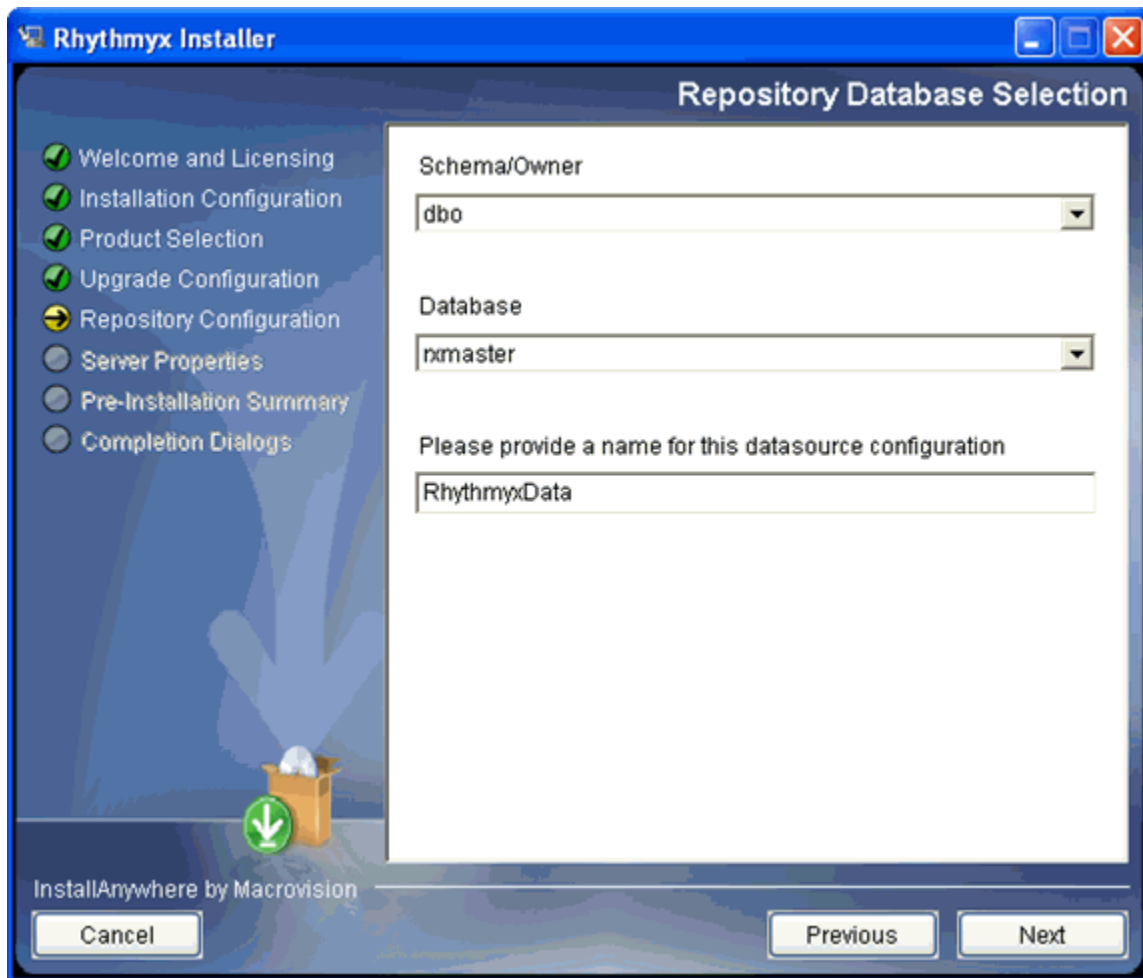


Figure 37: Schema and database definition



- in the command-line installation wizard:
  - When installing the Repository to Oracle or DB2, enter the ID of the schema for the repository. Options include all schemas defined in the instance; the default option is the first schema. Press the <Enter> key when you have specified the schema you want to use.

```
Repository Database Selection
-----
Schema/Owner
->1- ANONYMOUS
 2- CTXSYS
 3- DBSNMP
 4- DIP
 5- EXFSYS
 6- MDDATA
 7- MDSYS
 8- MGMT_VIEW
 9- OLAPSYS
10- ORDPLUGINS
11- ORDSYS
12- MDSYS
13- MGMT_VIEW
14- OLAPSYS
15- ORACLE_OCM
16- ORDPLUGINS
17- ORDSYS
18- OUTLN
19- RXMASTER
20- SI_INFORMTN_SCHEMA
21- SYS
22- SYSMAN
23- SYSTEM
24- TMSYS
25- WKSYS
26- XDB

Enter one of the options above: █
```

Figure 38: Selecting the schema for a Repository installation to Oracle or DB2 in the command-line wizard

- When installing the Repository to Microsoft SQL Server, specify the database owner; enter the ID of the database owner from the list provided. Options include all database owners defined in the instance; the default is the first option. Press the <Enter> key to accept your selection.

```
Repository Database Selection
-----
Schema/Owner
->1- dbo
 2- guest
 3- INFORMATION_SCHEMA
 4- system_function_schema

Enter one of the options above: █
```

Figure 39: Specifying the database owner for a SQL Server installation in the command-line wizard

Next, specify the database you want to use. Enter the ID of the database you want to use from the list provided. Options include all databases defined in the instance; the default is the first option. Press the <Enter> key to accept your selection.

```
Database
->1- AITBackup
 2- master
 3- msdb
 4- Northwind
 5- pubs
 6- rhythmyx
 7- rx_Events
 8- Rx_Mako_Unix
 9- Rx57Stable
10- RX60FF
11- Rx60MarlinUpgrade
12- RX60NOFF
13- Rx61MarlinUpgrade
14- rxalt
15- RxMako
16- rxmaster
17- RxQA
18- RxRhino
19- rxSolaris
20- RxUpgrade
21- tempdb

Enter one of the options above: █
```

Figure 40: Specifying the SQL Server database for the Repository in the command-line wizard.

After you specify the schema or database for the Repository, the installation wizard asks you to specify the name of the datasource Rhythmyx will use to connect to the database or schema you specified. The name defaults to *RhythmyxData*, but you can change it to any other name you prefer.

```
Please provide a name for this datasource configuration
(DEFAULT:
 RhythmyxData): █
```

Figure 41: Configuring the name of the Rhythmyx datasource in the command-line wizard

Press the <Enter> key to accept the name and continue with the installation.

## Server Properties

The final phase in the installation wizard is to define Rhythmyx server properties. In this phase, you define the type of server you are installing, the ports the Rhythmyx server will listen on, and, in a Windows environment, the name of the Rhythmyx service.

When you complete Repository configuration, the installation wizard asks you to define the Rhythmyx server type. Options include:

- System master

A system master is a Rhythmyx server that supports both content maintenance and publishing. Every installation requires at least one system master.

- Publishing hub

A publishing hub is a Rhythmyx server used solely for publishing. Content maintenance is not allowed on a publishing hub. Publishing hubs are optional and are generally used in environments with a high volume of publishing activity.

To specify the server type:

- in the graphic installation wizard, select the server type you want to install;

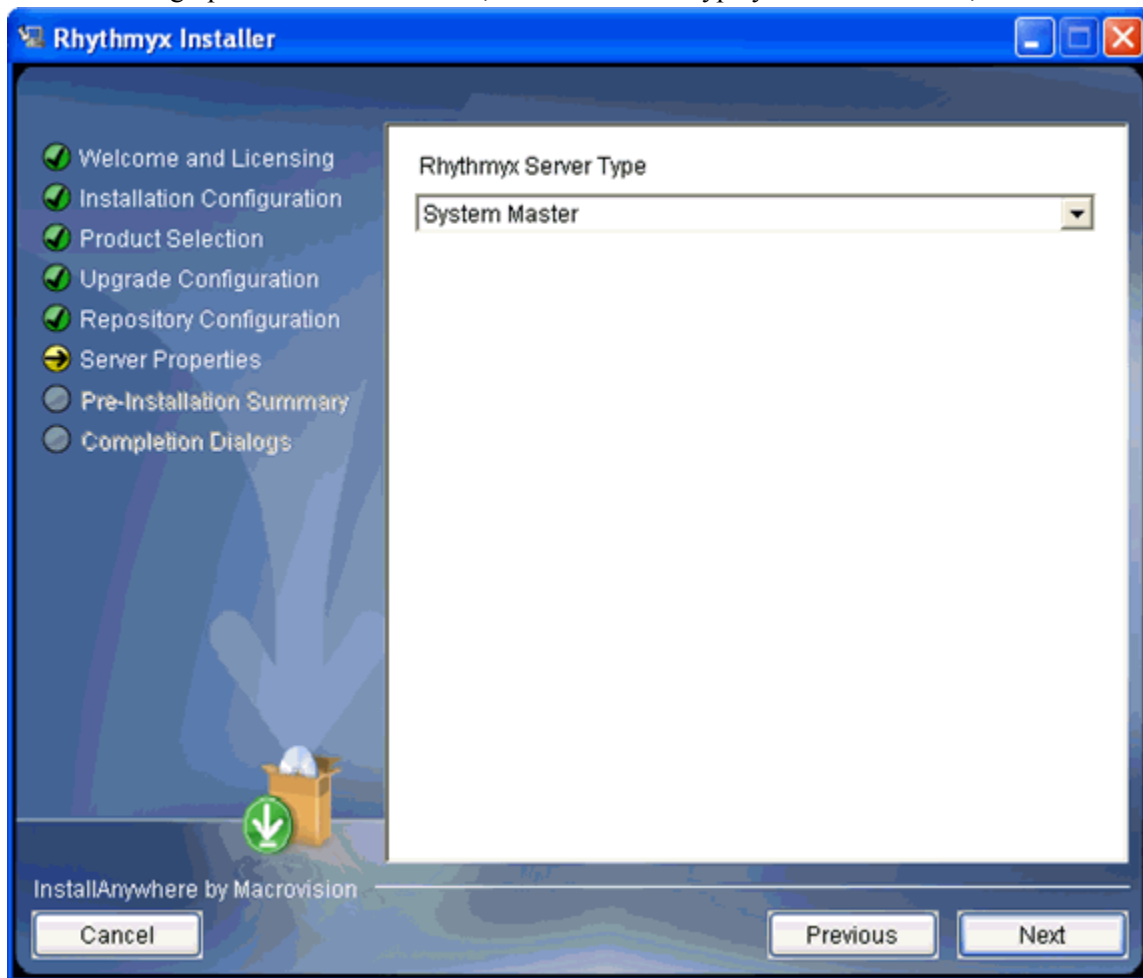
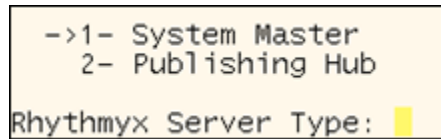


Figure 42: Server Type

- in the command-line installation wizard, enter the ID of the server type you want to install. Options include:
  - 1 System master
  - 2 Publishing Hub

A screenshot of a terminal window showing the Rhythmyx installation wizard. The prompt is "Rhythmyx Server Type:" followed by a yellow cursor. The options are listed as "1- System Master" and "2- Publishing Hub". The first option is highlighted with a yellow background.

```
->1- System Master
    2- Publishing Hub
Rhythmyx Server Type: |
```

*Figure 43: Configuring the server type in the command-line wizard*

Next, the Installation wizard asks you to define the Rhythmyx server properties.

- In a Windows environment, you must define the name and description of the Rhythmyx service, as well as the Rhythmyx port.
  - In the graphic installation wizard, enter the **Rhythmyx service name** (defaults to *Rhythmyx Server*) and **Rhythmyx Service description** ( defaults to *Percussion Rhythmyx Server*). You can accept the default name and description or enter a new one. Enter the **Rhythmyx port**. This value defaults to *9992*, but you can change it to any other valid port. Click the [**Next**] button when you are done.

In addition to the specified port, Rhythmyx uses the next six ports for internal purposes. You should confirm that other applications are not using these ports. If you need to change one of these ports, check the **Customize additional ports** box. When you click the **[Next]** button, the wizard displays the Application Server Settings dialog. You can change any of these ports to another valid port.

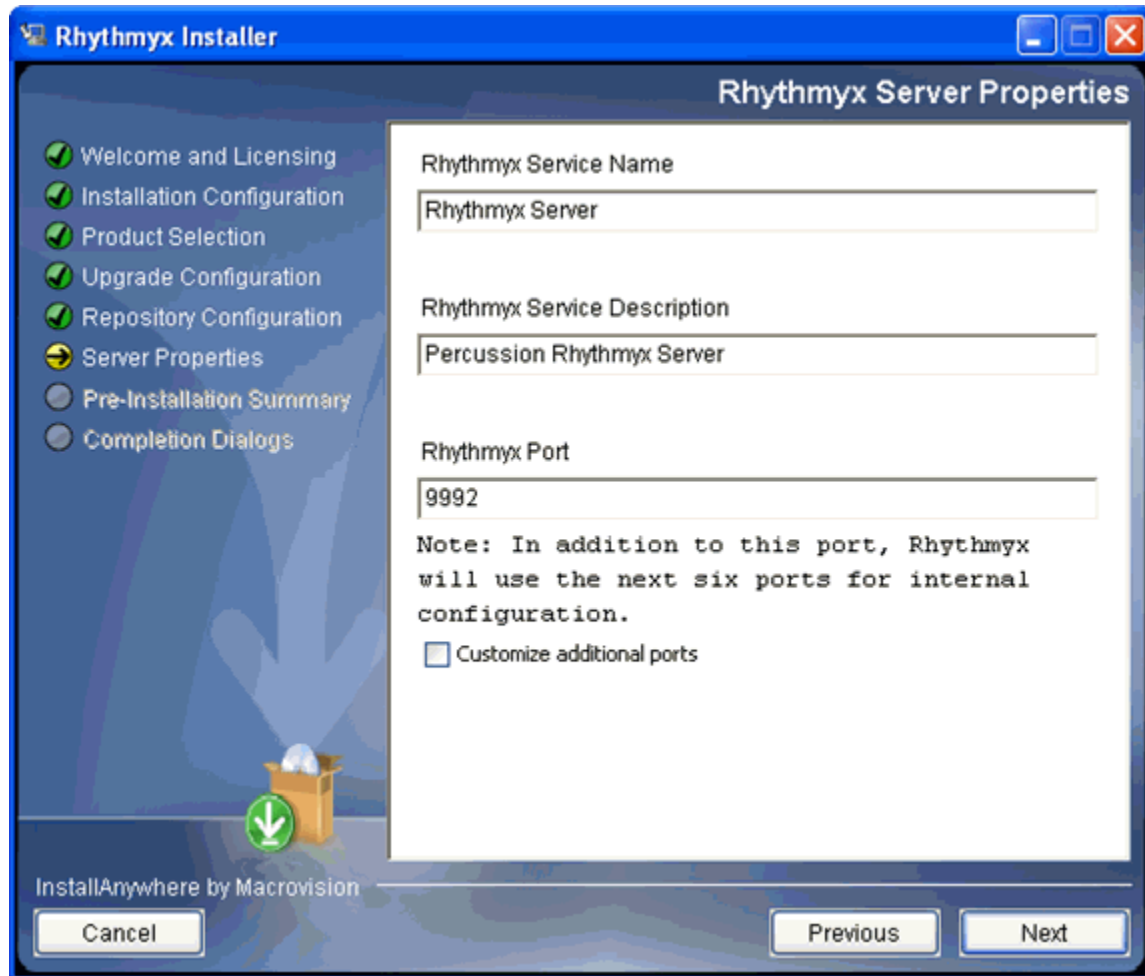


Figure 44: Server properties

- In a Solaris or Linux environment, specify the Rhythmyx port, and optionally, the additional ports used by the Rhythmyx container.
  - The command-line wizard asks you to specify the Rhythmyx port. The default port is 9992.

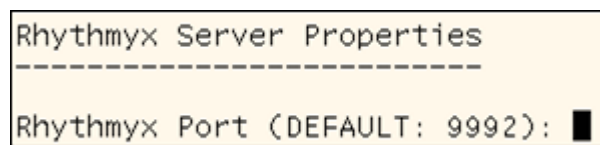


Figure 45: Specifying the Rhythmyx port in the command-line wizard on Solairs or Linux

In addition to the specified port, Rhythmyx uses the next six ports for internal purposes. You should confirm that other applications are not using these ports. The wizard then asks if you want to configure the additional ports used by the Rhythmyx container. Regardless of your answer, the wizard displays a warning that each port configured for Rhythmyx must be unique. If you choose to configure the ports, the wizard displays each of the additional ports being used with the currently specified port value. You can change any of these values.

```
Rhythmyx Port (DEFAULT: 9992):
Note: In addition to this port, Rhythmyx will use the next six ports for
internal configuration.
Customize additional ports (Y/N): y
Each port number in this installation must be unique.
  If the port number on this page duplicates any other
  in this installation,
  then return to this page and change the port number.
  Continue to show this warning? (Yes/No): yes

-----
-----
Application Server Settings
-----
-----

Naming Service Port. (DEFAULT: 9993): Naming Service RMI
Port. (DEFAULT: 9994):
JRMP Invoker Service RMI Port. (DEFAULT: 9995):
Pooled Invoker Service Port. (DEFAULT: 9996):
JMS UIL2 Service Port. (DEFAULT: 9997):
AJP 1.3 Service Port. (DEFAULT: 9998):
Each port number in this installation must be unique.
  If the port number on this page duplicates any other
  in this installation,
  then return to this page and change the port number.
  Continue to show this warning? (Yes/No): █
```

Figure 46: Configuring Rhythmyx container ports in the command-line wizard on Solaris and Linux

## Installation Summary

Once you have configured all the installation data, Rhythmyx displays an installation summary.

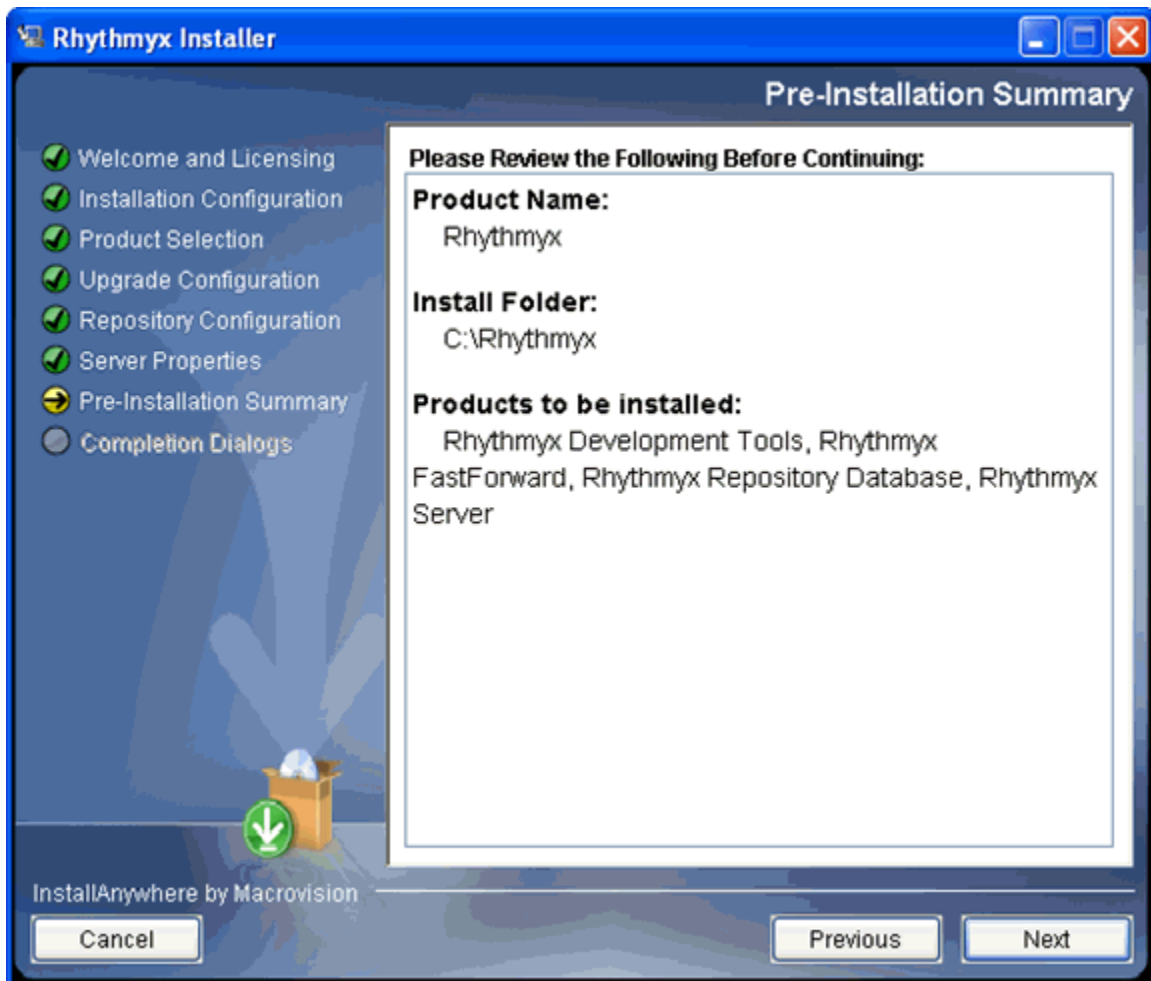


Figure 47: Pre-installation summary

```
Pre-Installation Summary
-----
Please Review the Following Before Continuing:
Product Name:
  Rhythmyx
Install Folder:
  /home/rjohnson/Rhythmyx
Products to be installed:
  Rhythmyx FastForward, Rhythmyx Repository Database,
  Rhythmyx Server

PRESS <ENTER> TO CONTINUE: █
```

*Figure 48: Installation summary in command-line wizard*

Review the installation details as configured.

If you need to change any installation configurations:

- In the graphic installation wizard, click the [**Previous**] button until you reach the dialog listing the data you need to change. Modify the data and proceed through the installation wizard again.
- In the command-line installation wizard enter *Back* (any combination of upper- and lower-case letters); repeat until you reach the portion of the wizard you need to modify..

To launch the installation:

- in the graphic installation wizard, click the [**Next**] button;
- in the command-line installation wizard, press the <Enter> key.



## Completing the Installation

During installation, the installation wizard displays the progress of the installation:

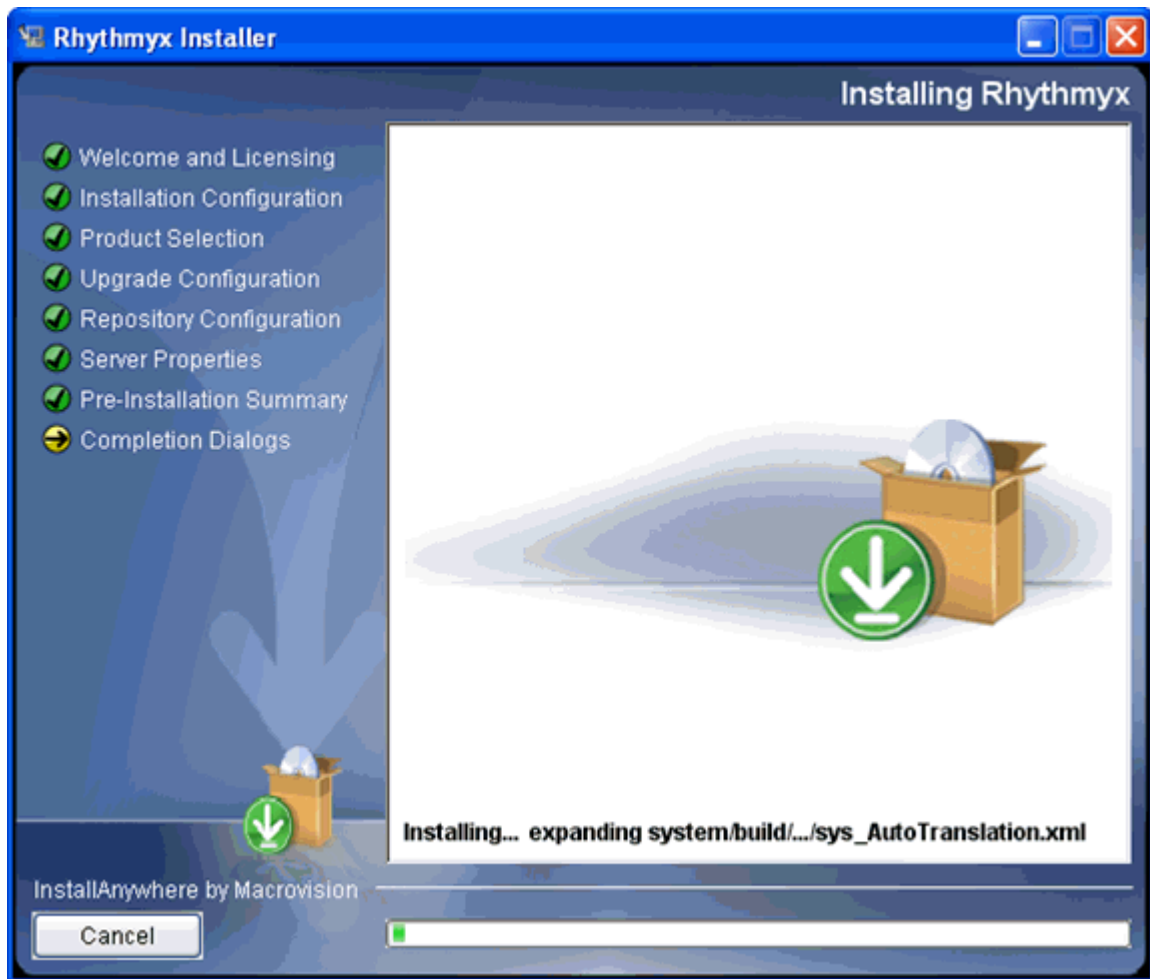


Figure 49: Installation progress messages

```

Installing...
-----
[-----|-----|-----]
[
Expanding: server.zip to: /tmp/708551.tmp.....Done
-----
Expanding: doc.zip to: /tmp/708551.tmp.....Done
-----
Installing Rhythmyx...
-----|-----
  
```

Figure 50: Installation progress in the command-line wizard

When installation is complete, the installation wizard displays the readme:

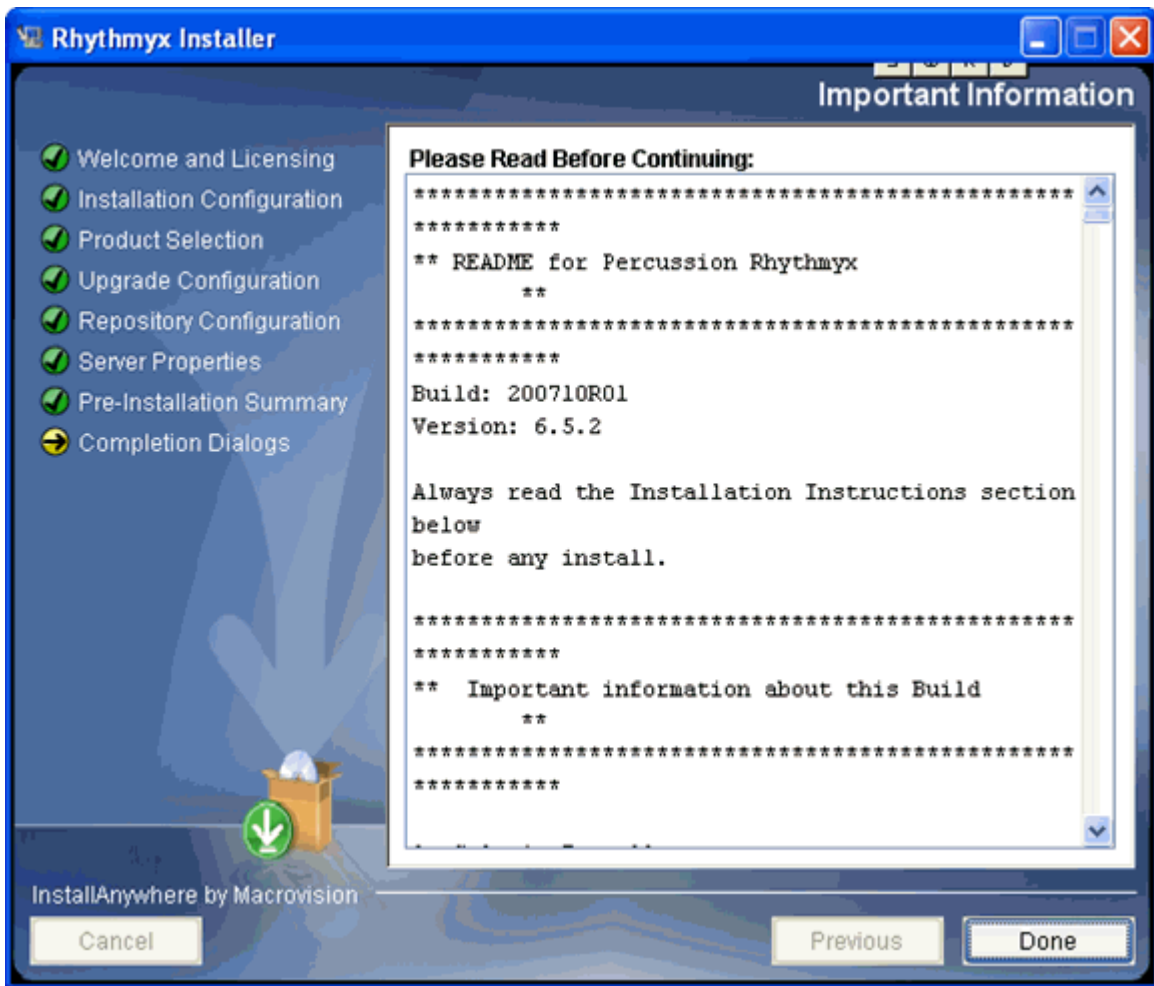


Figure 51: Readme window

```
*****  
** README for Percussion Rhythmyx          **  
*****  
Build: 200812R01  
Version: 6.6  
  
Always read the Installation Instructions  
section below before any install.  
  
*****  
** Important information about this Build  **  
*****  
  
1. Solaris Install:  
  
You cannot run the Solaris installation  
from the DVD-ROM directly. You must  
copy the files from the DVD-ROM to the  
home directory of the user installing  
Rhythmyx.  
  
2. Indexing content
```

*Figure 52: Readme on console*

To complete the installation:

- in the graphic installation wizard, click the **[Done]** button;
- in the command-line installation press the <Enter> key.

If an error occurs during installation, the installation wizard displays messages informing you of the error and the location of detailed log files:

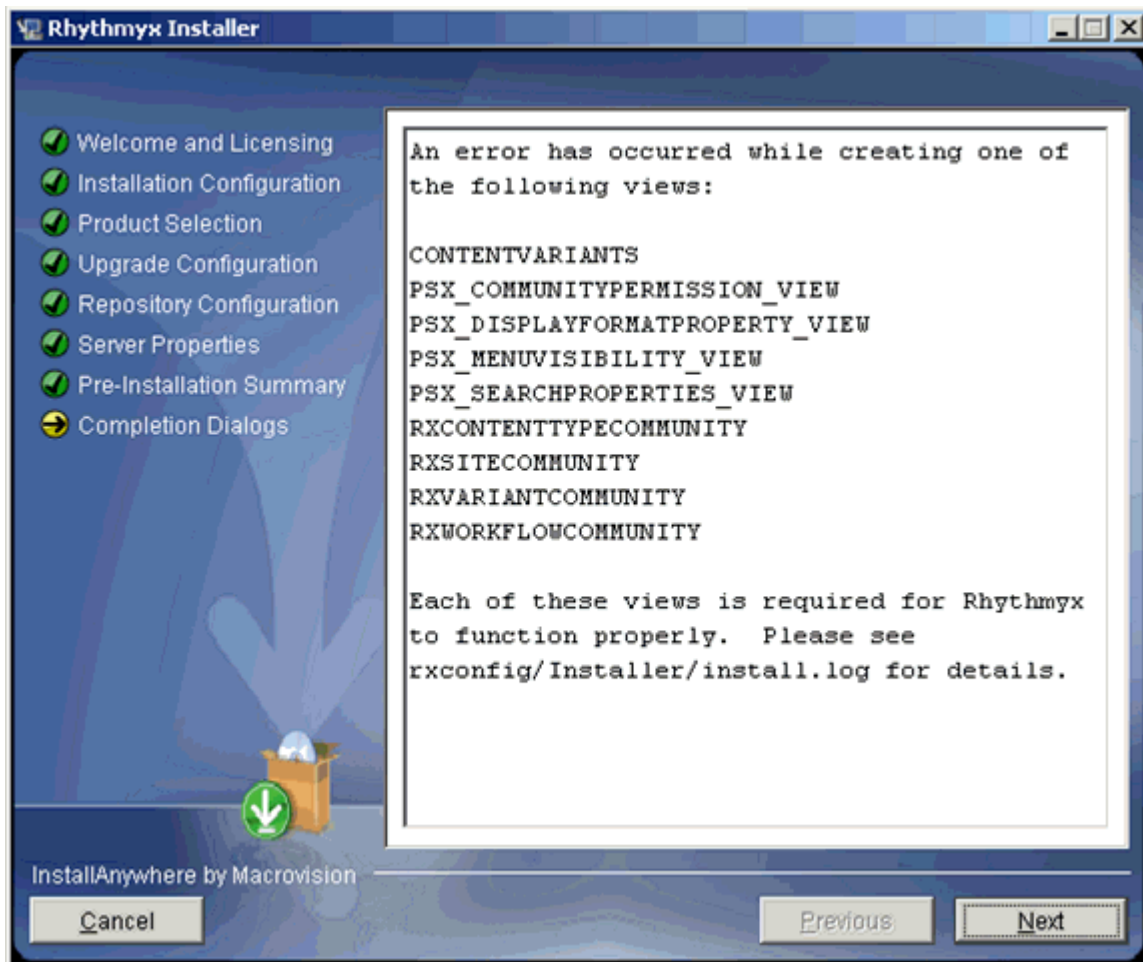


Figure 53: Install screen with error messages

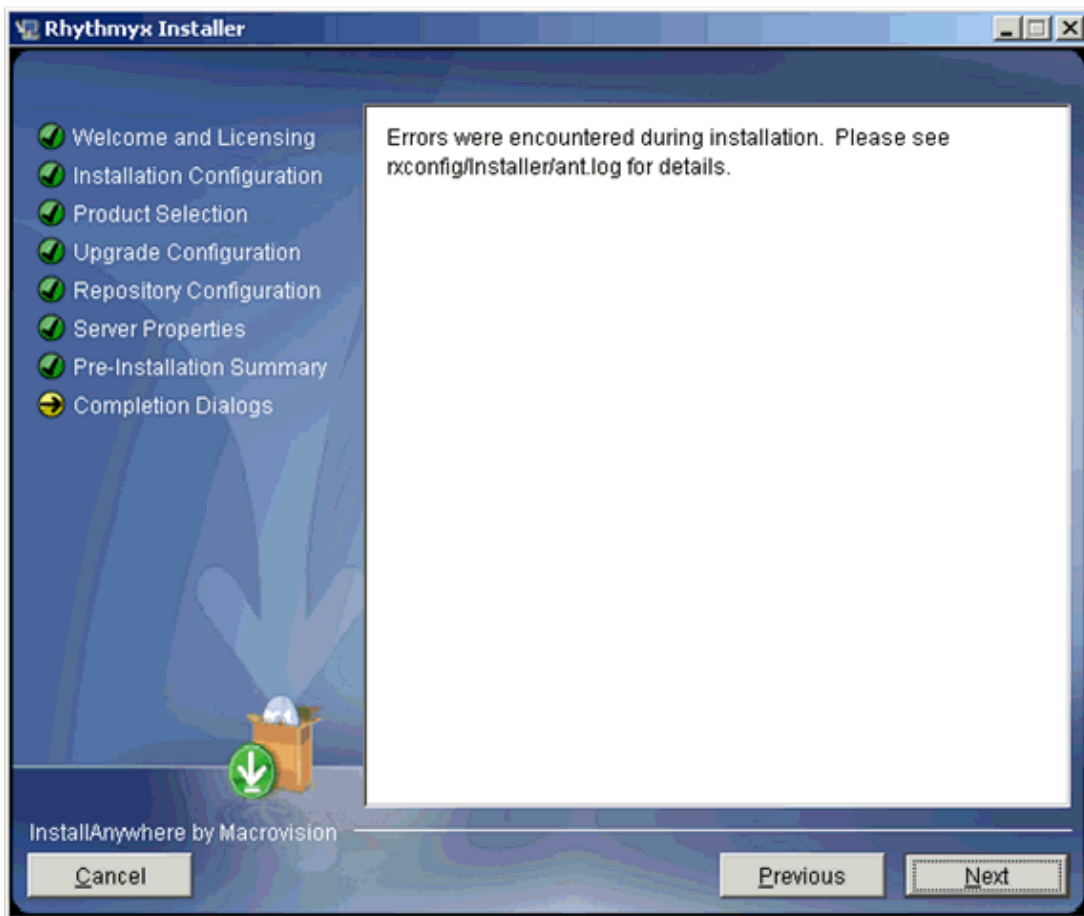


Figure 54: Log location message

```
An error has occurred while creating one of the following views:
CONTENTVARIANTS
PSX_COMMUNITYPERMISSION_VIEW
PSX_DISPLAYFORMATPROPERTY_VIEW
PSX_MENUVISIBILITY_VIEW
PSX_SEARCHPROPERTIES_VIEW
RXCONTENTTYPECOMMUNITY
RXSITECOMMUNITY
RXVARIANTCOMMUNITY
RXWORKFLOWCOMMUNITY

Each of these views is required for Rhythmyx to function properly.
Please see
rxconfig/Installer/install.log for details.
PRESS <ENTER> TO CONTINUE: █
```

Figure 55: Initial error report in command-line wizard

```
Errors were encountered during installation. Please see
rxconfig/Installer/ant.log for details.

PRESS <ENTER> TO CONTINUE:
```

Figure 56: Final error message in command-line wizard

When upgrading from Version 6.5.2 or earlier, re-index your content after completing the installation.

---

NOTE: If you are installing to Solaris or Linux, you must run `/Rhythmyx/InstallDaemon.sh` to complete the installation:

---

---

## Additional Procedures for Upgrades from Rhythmyx Version 5.7 and Earlier

In Rhythmyx 5.7, standard practice when adding custom extension classes was to store the class and .jar files in the directory `<Rhythmyxroot>/lib` or `<Rhythmyxroot>/libextras` and list the extension files in a .cp file. In Rhythmyx 6.0, this practice no longer works because the new Web application server container includes its own class loader and does not reference .cp files.

Any custom extension class files should be moved to the following directories:

- Class files should be moved to the directory `rxapp.war/WEB-INF/classes`.
- Java archive files (.jar files) should be moved to the directory `rxapp.war/WEB-INF/lib`.

Note that any .cp files that exist in the installation directory will be moved to the directory `<Rhythmyxroot>/upgrade/rx_cp_files` during the upgrade process.





## CHAPTER 3

# Additional Installation Issues

This chapter addresses miscellaneous issues related to installation of Rhythmyx.

---

## Important Security Measures

---

**Important:** Every new Rhythmyx installation includes a backend Database Security Provider. The backend Database Security Provider includes the following default users for each Role:

---

Role	DEFAULT USERS
Admin	admin1 admin2
Author	author1 author1
QA	qa1 qa2
Editor	editor1 editor2
Designer	designer1 designer2
Artist	artist1 artist2

You can use every default user and the password "demo" to access the Rhythmyx Server Administrator.

---

**NOTE:** The Admin Role also contains the Member rxserver. This Member is used internally in Rhythmyx as part of the Aging process. **DO NOT REMOVE THIS MEMBER UNDER ANY CIRCUMSTANCES.**

---

To prevent unintended access to your system choose one of the following options:

- assign new passwords to the default users, or
- replace the default users with new users.

## Assigning New Passwords to Default Users

To assign new passwords to the default users using SQL:

- 1 Open the USERLOGIN table in the database.
- 2 In the Password column, change the password for each default user.

Each new password becomes effective as soon as you enter it.

To assign new passwords to the default users using an Oracle SQL\*Plus application:

- 1 At the prompt change the password for the admin1 role by entering the following script:  

```
update userlogin set password='somethingnotdemo' where userid='admin1';
```
- 2 Repeat for each default user, changing userid accordingly.

Each new password becomes effective as soon as you change it.

## Replacing the Default Users with New Users

---

**NOTE:** In addition to the default users admin1 and admin2, the Admin Role also contains the Member rxserver. This Member is used internally in Rhythmyx as part of the Aging process. **DO NOT REMOVE THIS MEMBER UNDER ANY CIRCUMSTANCES.** If you remove this Member, Workflow authentication will fail.

---

To replace the default users with new users:

- 1** Open the USERLOGIN table in the database.
- 2** Add a new user to each role with the same permissions as the default users, but give the new users different names (such as 'anthonyadmin' and 'dianedesigner') and passwords.
- 3** After creating a new user for each role, delete the default users from your database.

---

## Rhythmyx Workbench Options

The Rhythmyx Workbench runs on the Eclipse platform. When the Workbench is installed (whether as part of a complete suite installation or with the other Developer Tools), it runs as a stand-alone executable application. (Note: Like all Developer Tools, the Workbench can only be installed to Microsoft Windows. Installation of the Workbench to Solaris or Linux is not supported.)

The Rhythmyx Workbench can also be added as a plugin to an existing Eclipse installation. Your Eclipse installation must meet the following criteria:

- Only Eclipse Version 3.0 and 3.1 are supported.
- You must have the Web Standard Tools (WST) plugin installed. Download the Web Standard Tools plugin from <http://download.eclipse.org/webtools/downloads/> (http://download.eclipse.org/webtools/downloads/). Use the version of WST appropriate to your version of Eclipse.
- The minimum supported JDK Version for Rhythmyx is version 1.5.

To add the Rhythmyx Workbench to Eclipse, unzip the following files to your Eclipse installation.

- RhythmyxWorkbench.zip
- RhythmyxWorkbenchHelp.zip

To access Rhythmyx, in Eclipse, open the Rhythmyx perspective. The Rhythmyx perspective will prompt you to log in to the Rhythmyx server.

NOTE: If you see an error similar to the following:

```
java.lang.UnsupportedClassVersionError:  
com/percussion/workbench/ui/PSWorkbenchPlugin (Unsupported major.minor  
version 49.0)
```

your Eclipse installation is using JRE Version 1.4. Upgrade the JRE to Version 1.5.

When you upgrade Rhythmyx, update your Rhythmyx plugin by unzipping the upgraded versions of RhythmyxWorkbench.zip and RhythmyxWorkbenchHelp.zip to your Eclipse installation.

---

# Technical Support

Contact Percussion Technical Support by phone or e-mail.

## **Boston**

600 Unicorn Park Drive

Woburn, MA 01801 U.S.A.

8:30 AM to 6 PM EST, Monday - Friday

Phone: 781.438.9900

Toll Free: 800.283.0800

Fax: 781.438.9955

Email: [technical\\_support@percussion.com](mailto:technical_support@percussion.com)

## **London**

2 Soho Square

London W1D 3PX U.K.

8:30 AM to 6 PM GMT, Monday - Friday

Phone:(+44) (0) 207.334.5900

Fax: (+44) (0) 207.437.5940

Email: [technical\\_support\\_UK@Percussion.com](mailto:technical_support_UK@Percussion.com)